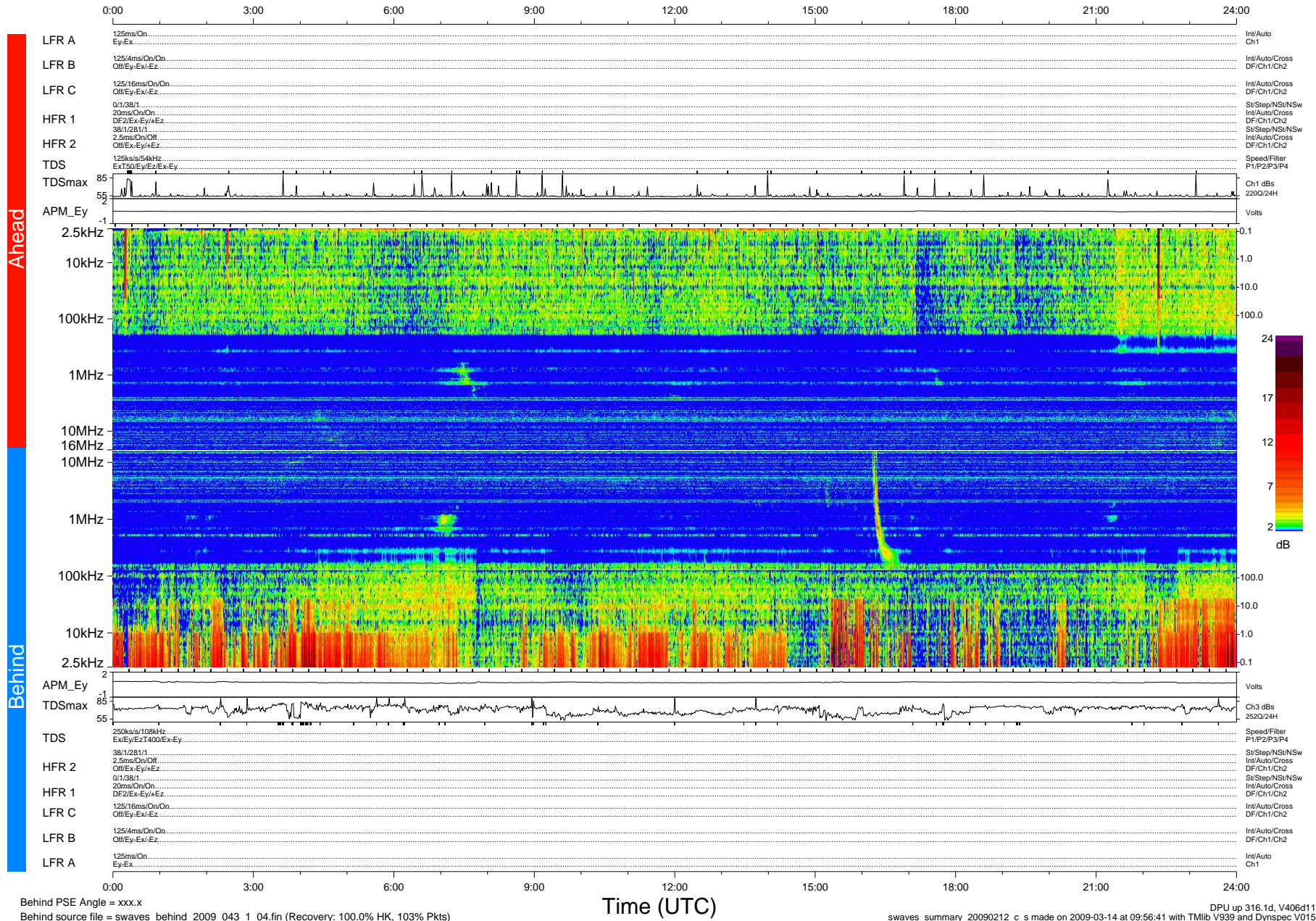


STEREO/WAVES Daily Summary - 12-Feb-2009 (DOY 043)

Ahead source file = swaves_ahead_2009_043_1_04.fin (Recovery:100.0% HK, 98% Pkts)
 Ahead PSE Angle = xxx.x

DPU up 22.1d, V406d6



Behind PSE Angle = xxx.x
 Behind source file = swaves_behind_2009_043_1_04.fin (Recovery: 100.0% HK, 103% Pkts)

DPU up 316.1d, V406d11
 swaves_summary_20090212_c_s made on 2009-03-14 at 09:56:41 with TMIb V939 and Dynspec V015