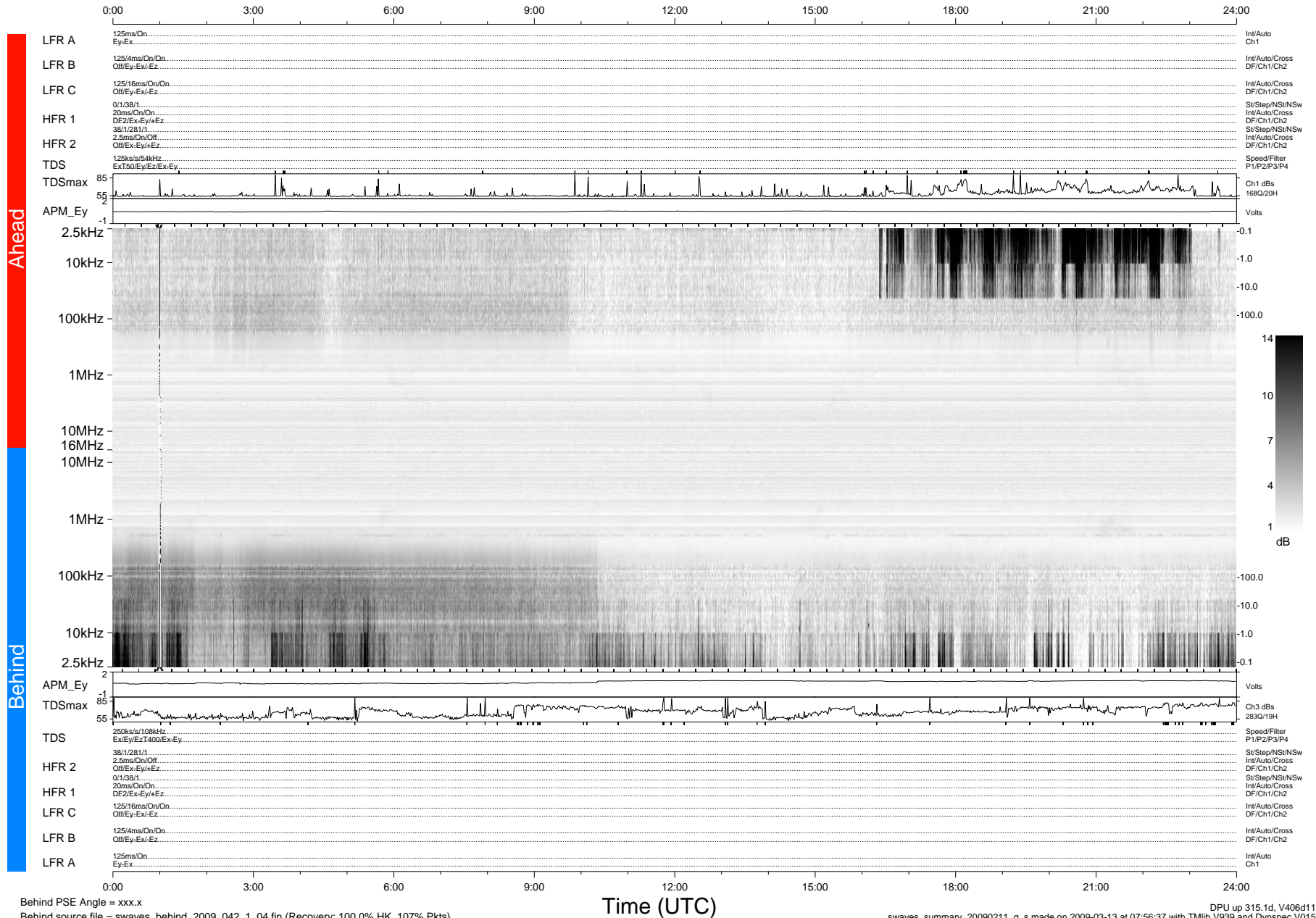


# STEREO/WAVES Daily Summary - 11-Feb-2009 (DOY 042)

Ahead source file = swaves\_ahead\_2009\_042\_1\_04.fin (Recovery:100.0% HK, 90% Pkts)  
 Ahead PSE Angle = xxx.x

DPU up 21.1d, V406d6



Behind PSE Angle = xxx.x  
 Behind source file = swaves\_behind\_2009\_042\_1\_04.fin (Recovery: 100.0% HK, 107% Pkts)

Time (UTC)

DPU up 315.1d, V406d11  
 swaves\_summary\_20090211\_g\_s made on 2009-03-13 at 07:56:37 with TMIib V939 and Dynspec V015