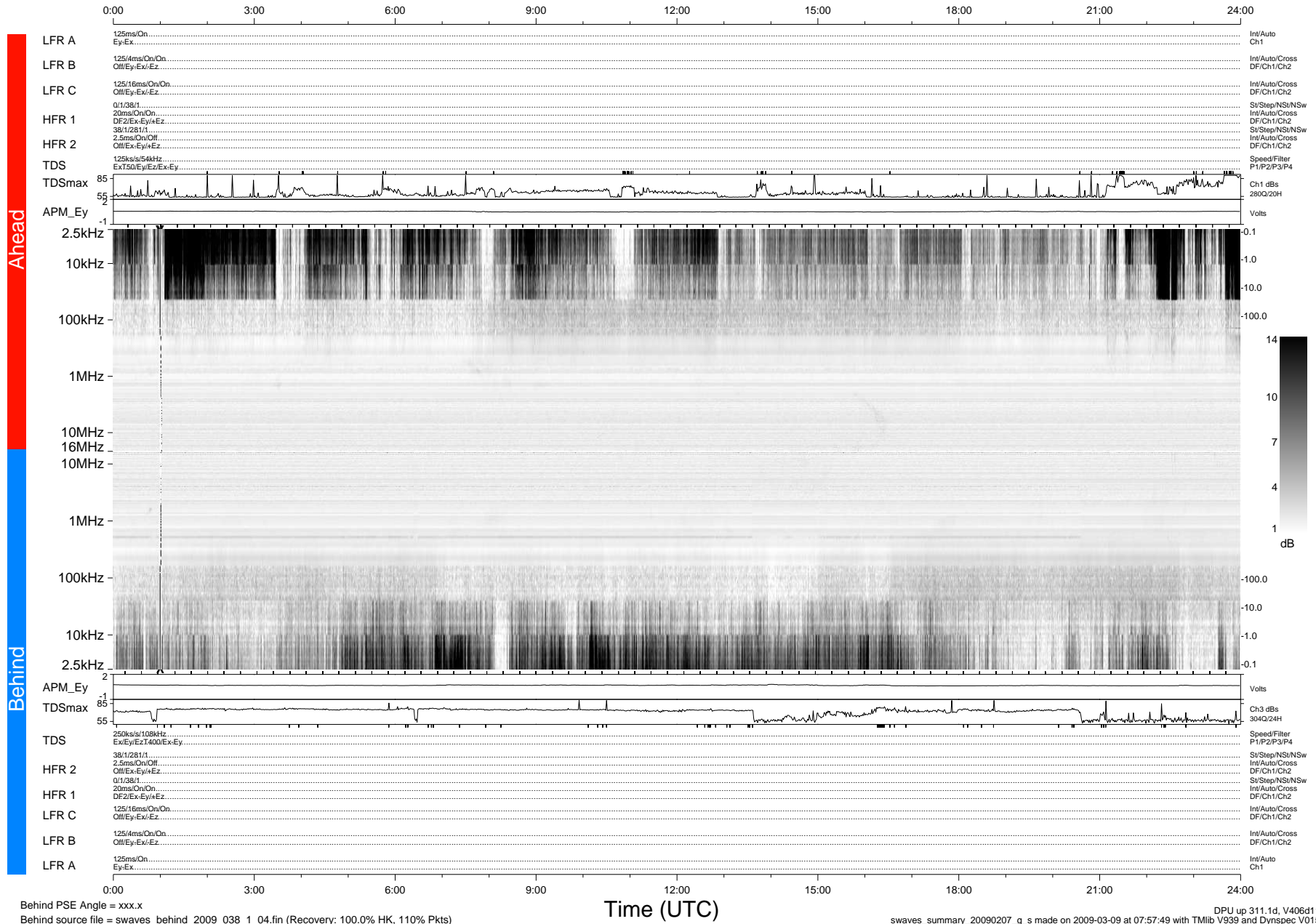


# STEREO/WAVES Daily Summary - 07-Feb-2009 (DOY 038)

Ahead source file = swaves\_ahead\_2009\_038\_1\_04.fin (Recovery:100.0% HK, 106% Pkts)  
 Ahead PSE Angle = xxx.x

DPU up 17.1d, V406d6



Behind PSE Angle = xxx.x  
 Behind source file = swaves\_behind\_2009\_038\_1\_04.fin (Recovery: 100.0% HK, 110% Pkts)

DPU up 311.1d, V406d11  
 swaves\_summary\_20090207\_g\_s made on 2009-03-09 at 07:57:49 with TMIlib V939 and Dynspec V015