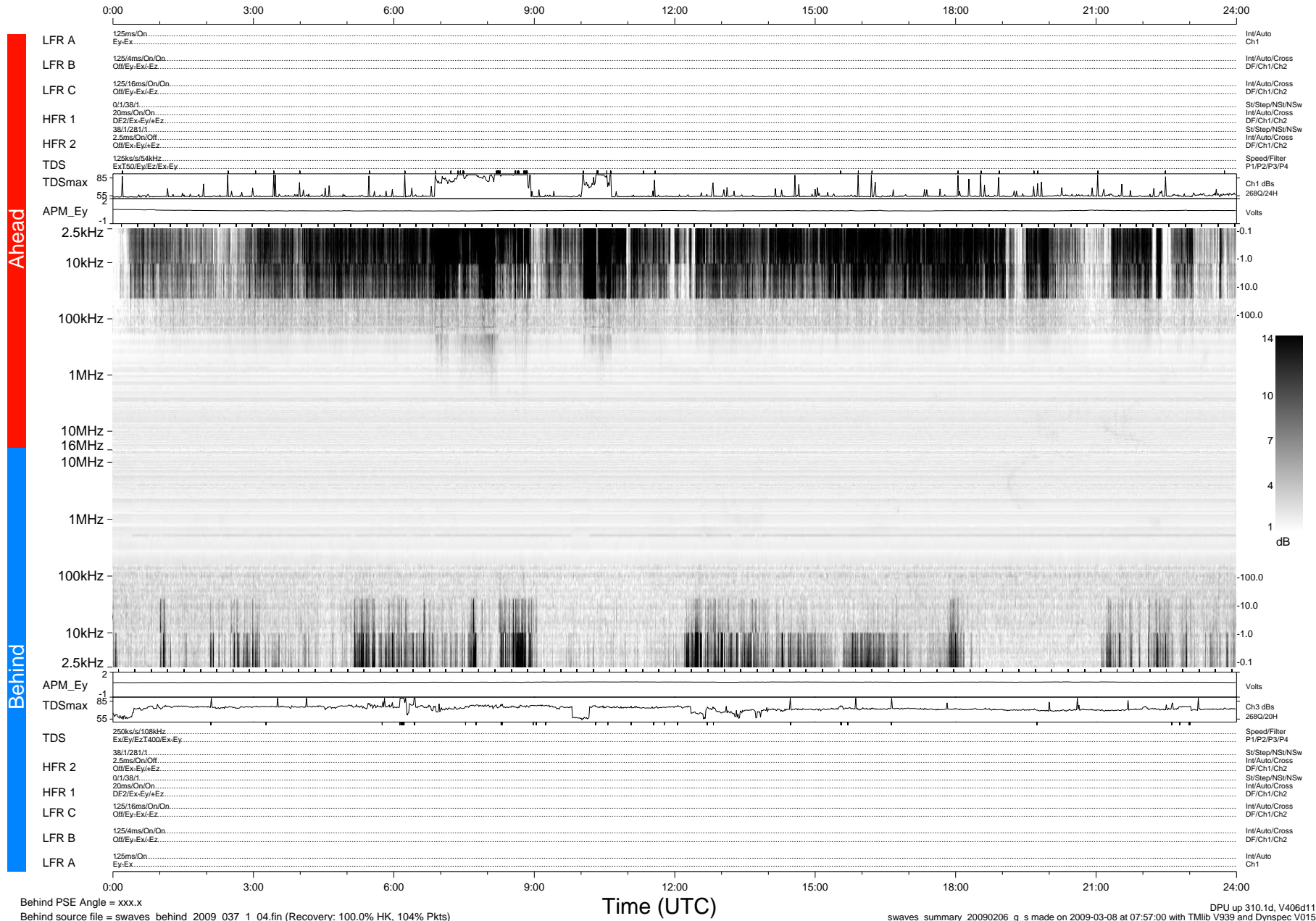


# STEREO/WAVES Daily Summary - 06-Feb-2009 (DOY 037)

Ahead source file = swaves\_ahead\_2009\_037\_1\_04.fin (Recovery:100.0% HK, 105% Pkts)  
 Ahead PSE Angle = xxx.x

DPU up 16.1d, V406d6



Behind PSE Angle = xxx.x  
 Behind source file = swaves\_behind\_2009\_037\_1\_04.fin (Recovery: 100.0% HK, 104% Pkts)

swaves\_summary\_20090206\_g\_s made on 2009-03-08 at 07:57:00 with TMIlib V939 and Dynspec V015