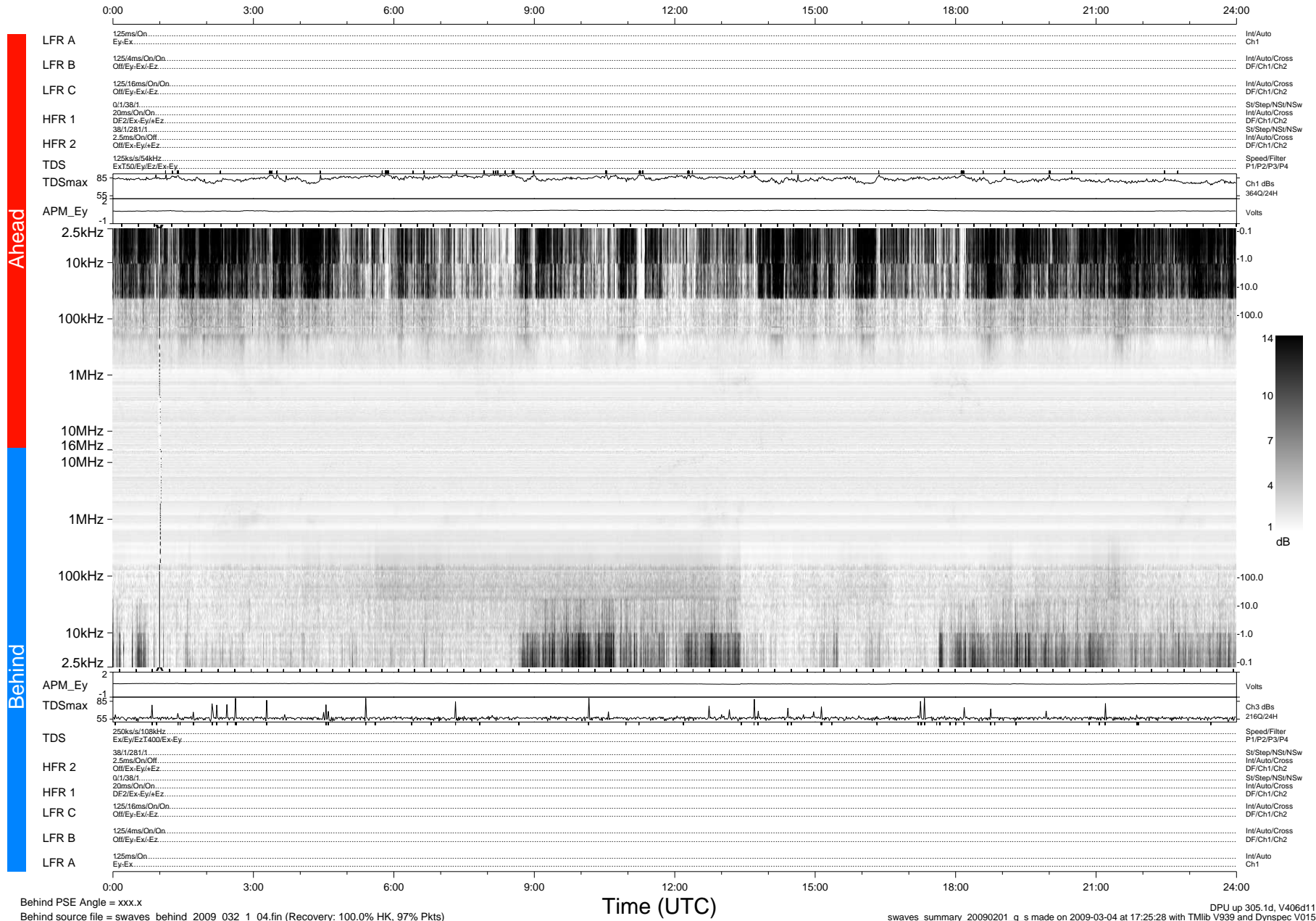


# STEREO/WAVES Daily Summary - 01-Feb-2009 (DOY 032)

Ahead source file = swaves\_ahead\_2009\_032\_1\_04.fin (Recovery:100.0% HK, 119% Pkts)  
 Ahead PSE Angle = xxx.x

DPU up 11.1d, V406d6



Behind PSE Angle = xxx.x  
 Behind source file = swaves\_behind\_2009\_032\_1\_04.fin (Recovery: 100.0% HK, 97% Pkts)

DPU up 305.1d, V406d11  
 swaves\_summary\_20090201\_g\_s made on 2009-03-04 at 17:25:28 with TMIlib V939 and Dynspec V015