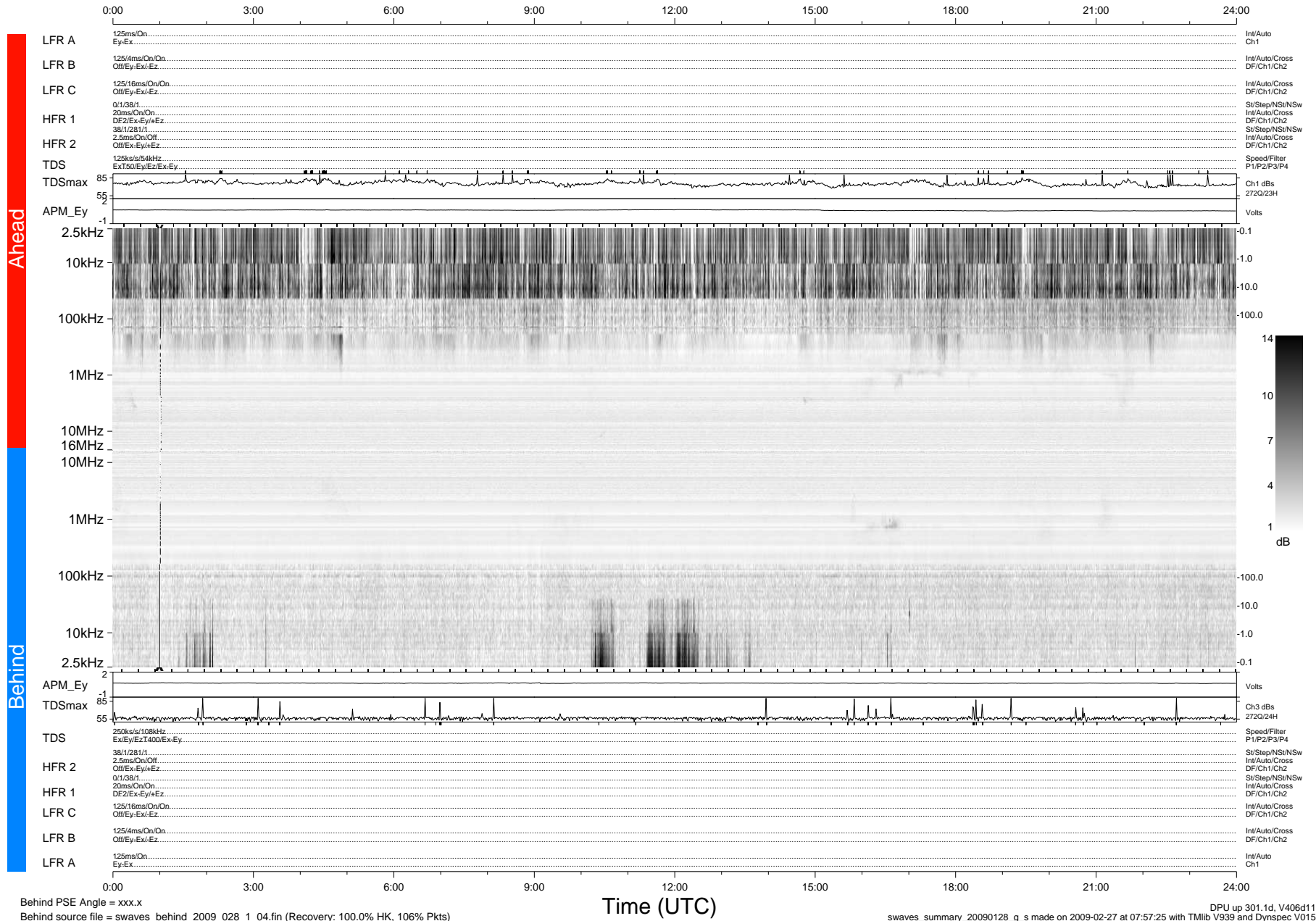


# STEREO/WAVES Daily Summary - 28-Jan-2009 (DOY 028)

Ahead source file = swaves\_ahead\_2009\_028\_1\_04.fin (Recovery:100.0% HK, 105% Pkts)  
 Ahead PSE Angle = xxx.x

DPU up 7.1d, V406d6



Behind PSE Angle = xxx.x  
 Behind source file = swaves\_behind\_2009\_028\_1\_04.fin (Recovery: 100.0% HK, 106% Pkts)

DPU up 301.1d, V406d11  
 swaves\_summary\_20090128\_g\_s made on 2009-02-27 at 07:57:25 with TMlib V939 and Dynspec V015