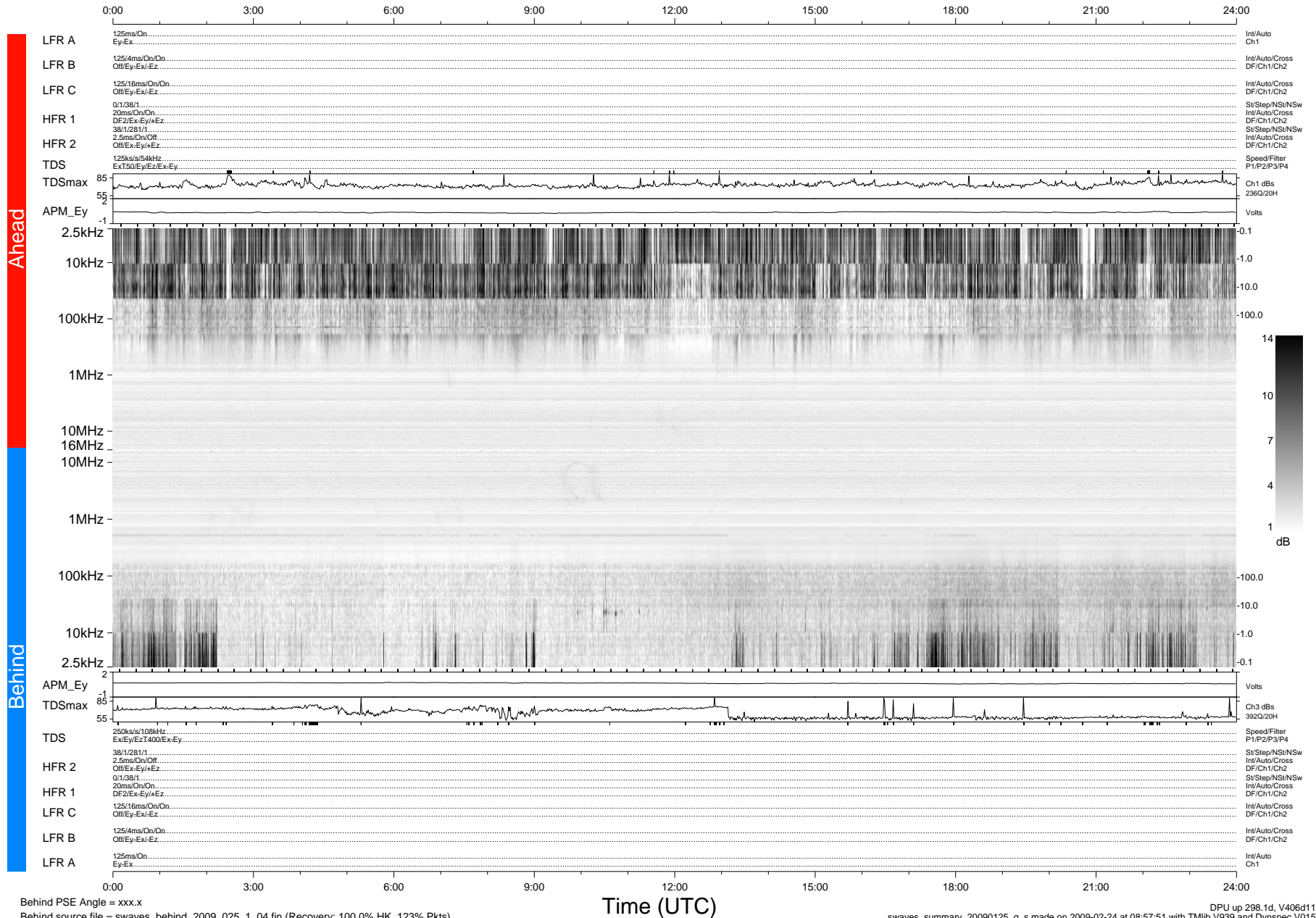


# STEREO/WAVES Daily Summary - 25-Jan-2009 (DOY 025)

Ahead source file = swaves\_ahead\_2009\_025\_1\_04.fin (Recovery:100.0% HK, 100% Pkts)  
 Ahead PSE Angle = xxx.x

DPU up 4.1d, V406d6



Behind PSE Angle = xxx.x  
 Behind source file = swaves\_behind\_2009\_025\_1\_04.fin (Recovery: 100.0% HK, 123% Pkts)

Time (UTC)

DPU up 298.1d, V406d11  
 swaves\_summary\_20090125\_g\_s made on 2009-02-24 at 08:57:51 with TMIlib V939 and Dynspec V015