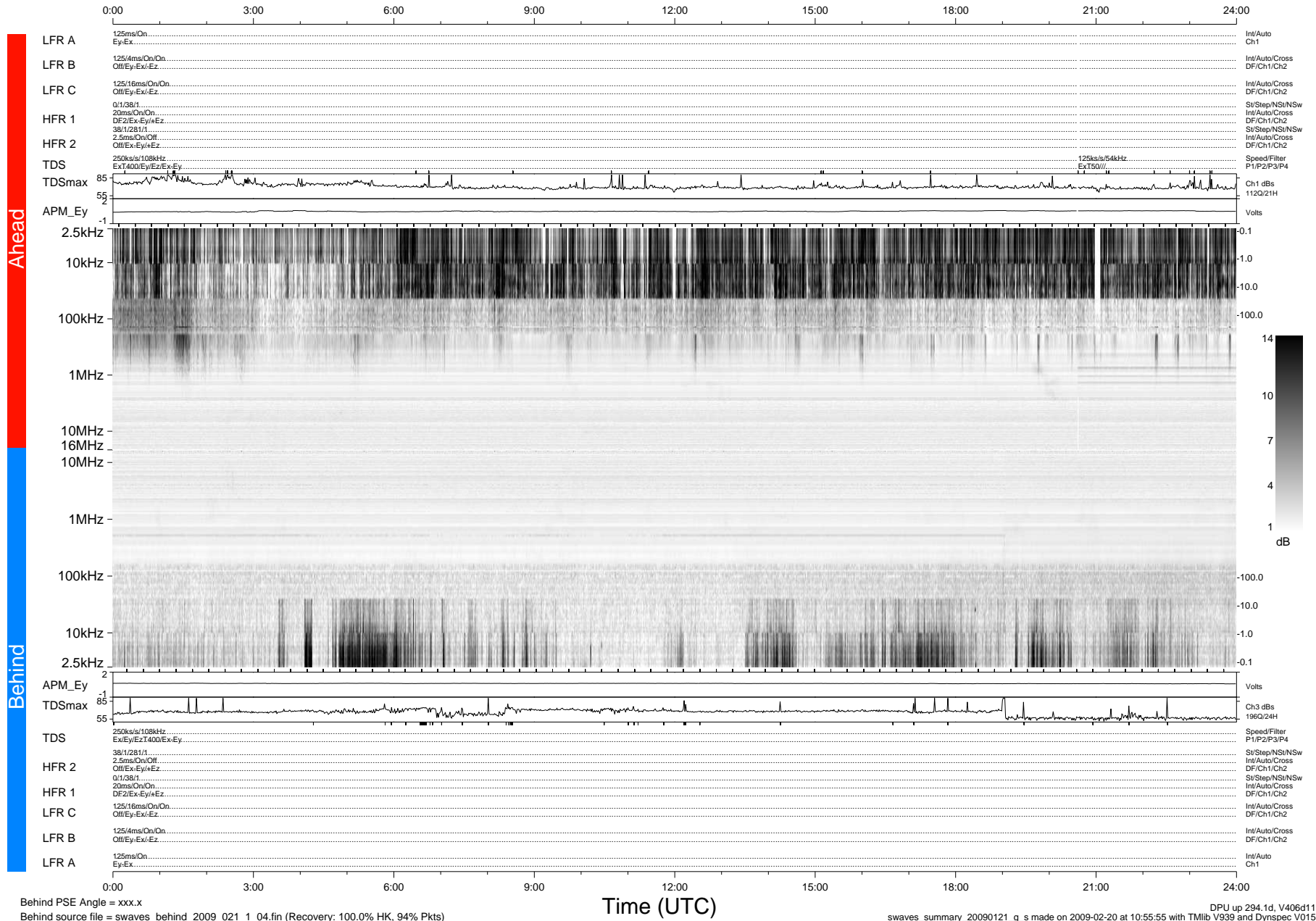


STEREO/WAVES Daily Summary - 21-Jan-2009 (DOY 021)

Ahead source file = swaves_ahead_2009_021_1_04.fin (Recovery:99.9% HK, 82% Pkts)
 Ahead PSE Angle = xxx.x

DPU up 0.1d, V406d6



Behind PSE Angle = xxx.x
 Behind source file = swaves_behind_2009_021_1_04.fin (Recovery: 100.0% HK, 94% Pkts)

DPU up 294.1d, V406d11
 swaves_summary_20090121_g_s made on 2009-02-20 at 10:55:55 with Tlib V939 and Dynspec V015