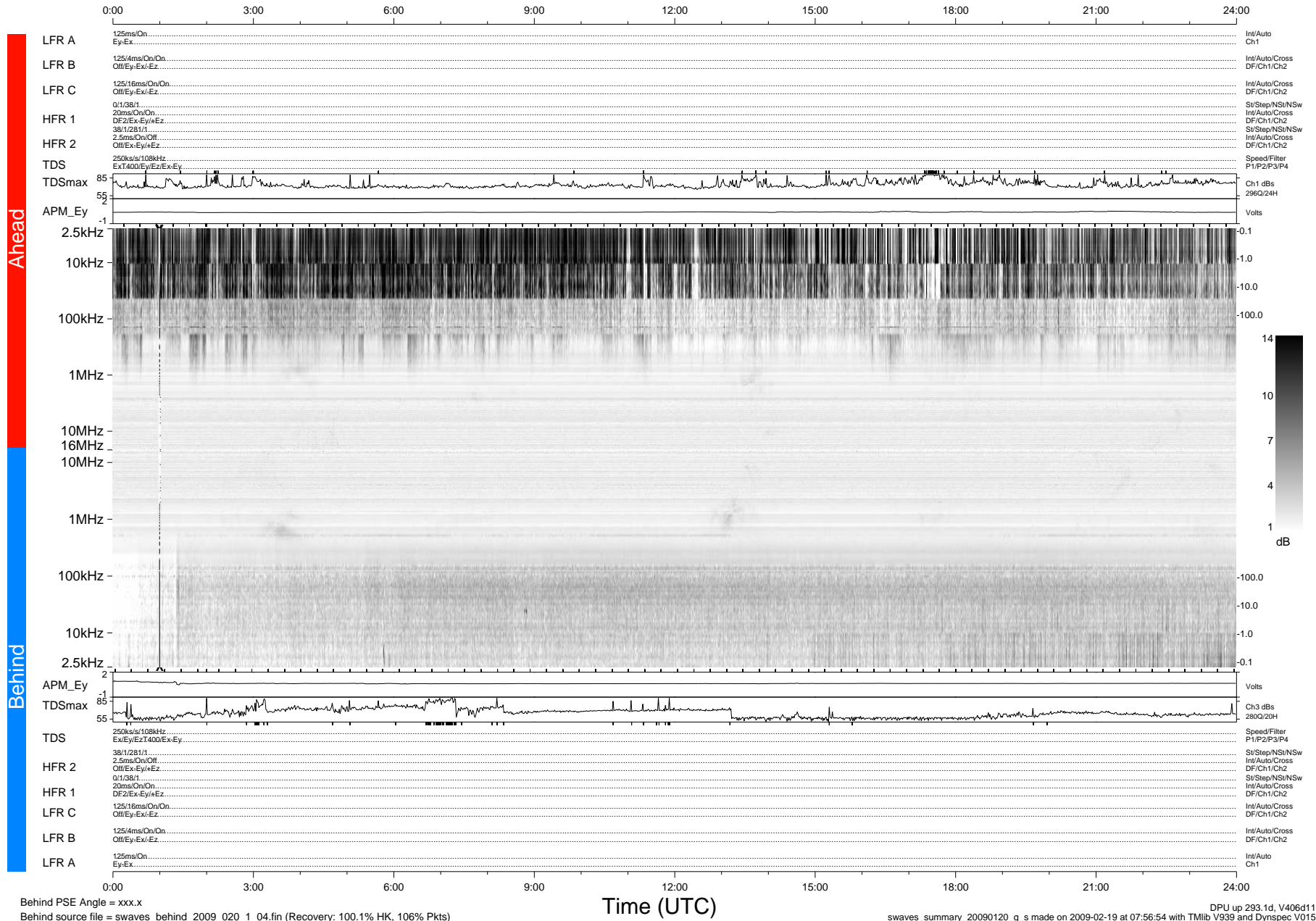


# STEREO/WAVES Daily Summary - 20-Jan-2009 (DOY 020)

Ahead source file = swaves\_ahead\_2009\_020\_1\_04.fin (Recovery:100.0% HK, 109% Pkts)  
 Ahead PSE Angle = xxx.x

DPU up 11.0d, V406d10



Behind PSE Angle = xxx.x  
 Behind source file = swaves\_behind\_2009\_020\_1\_04.fin (Recovery: 100.1% HK, 106% Pkts)

DPU up 293.1d, V406d11  
 swaves\_summary\_20090120\_g\_s made on 2009-02-19 at 07:56:54 with TMlib V939 and Dynspec V015