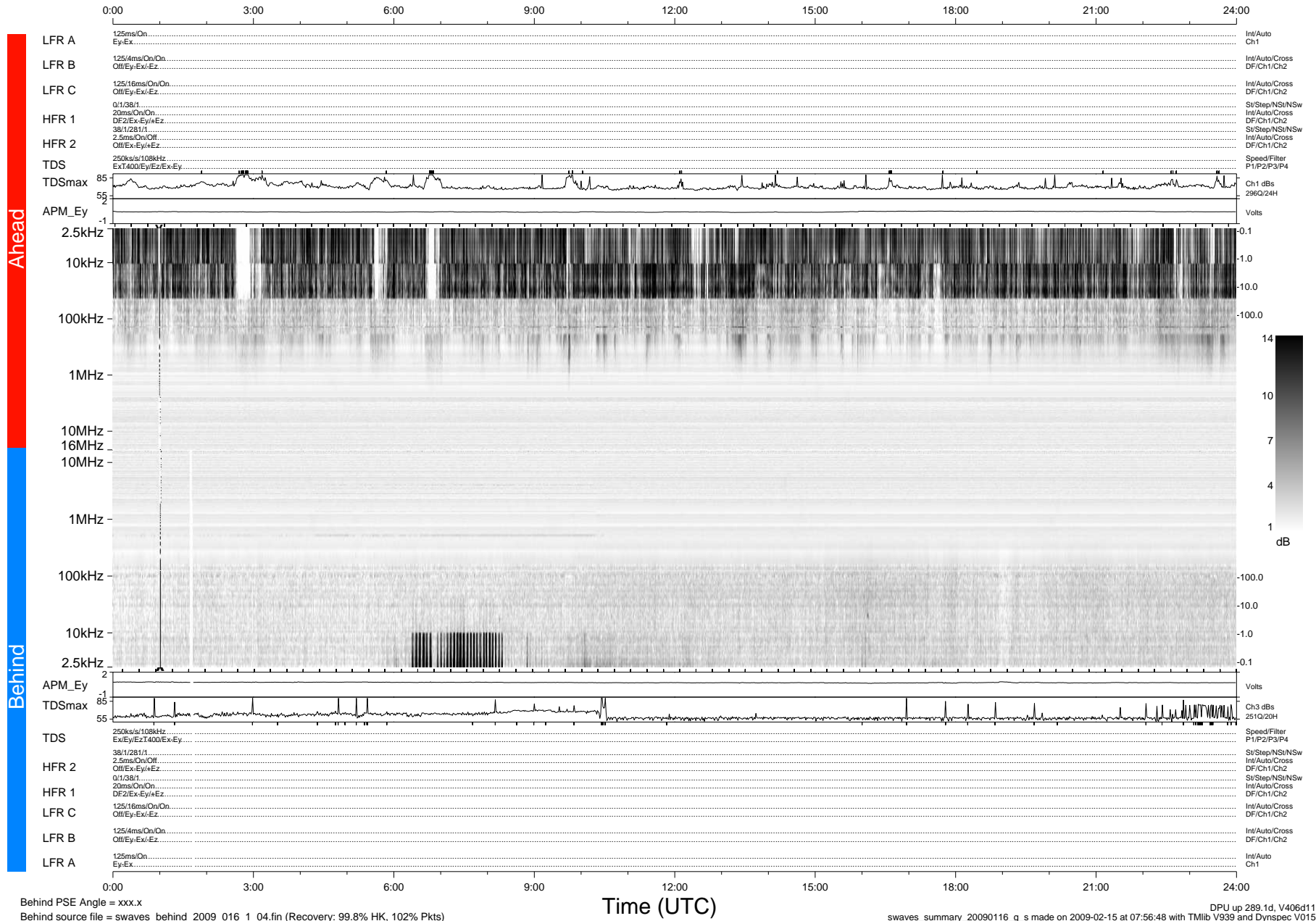


# STEREO/WAVES Daily Summary - 16-Jan-2009 (DOY 016)

Ahead source file = swaves\_ahead\_2009\_016\_1\_04.fin (Recovery:100.0% HK, 109% Pkts)  
 Ahead PSE Angle = xxx.x

DPU up 7.0d, V406d10



Behind PSE Angle = xxx.x  
 Behind source file = swaves\_behind\_2009\_016\_1\_04.fin (Recovery: 99.8% HK, 102% Pkts)

DPU up 289.1d, V406d11  
 swaves\_summary\_20090116\_g\_s made on 2009-02-15 at 07:56:48 with TMIlib V939 and Dynspec V015