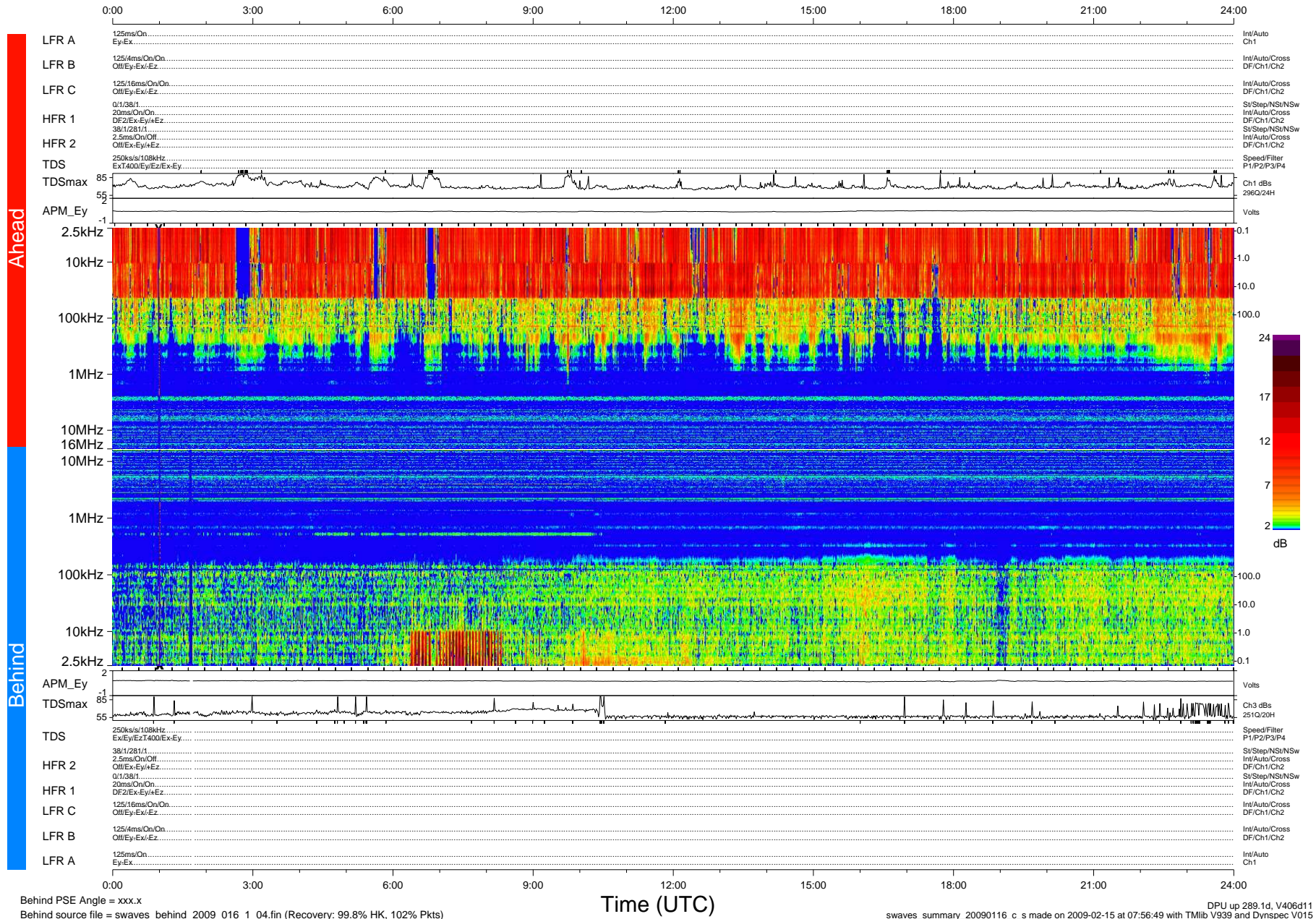


STEREO/WAVES Daily Summary - 16-Jan-2009 (DOY 016)

Ahead source file = swaves_ahead_2009_016_1_04.fin (Recovery:100.0% HK, 109% Pkts)
 Ahead PSE Angle = xxx.x

DPU up 7.0d, V406d10



Behind PSE Angle = xxx.x
 Behind source file = swaves_behind_2009_016_1_04.fin (Recovery: 99.8% HK, 102% Pkts)

Time (UTC)

DPU up 289.1d, V406d11
 swaves_summary_20090116_c_s made on 2009-02-15 at 07:56:49 with TMIib V939 and Dynspec V015