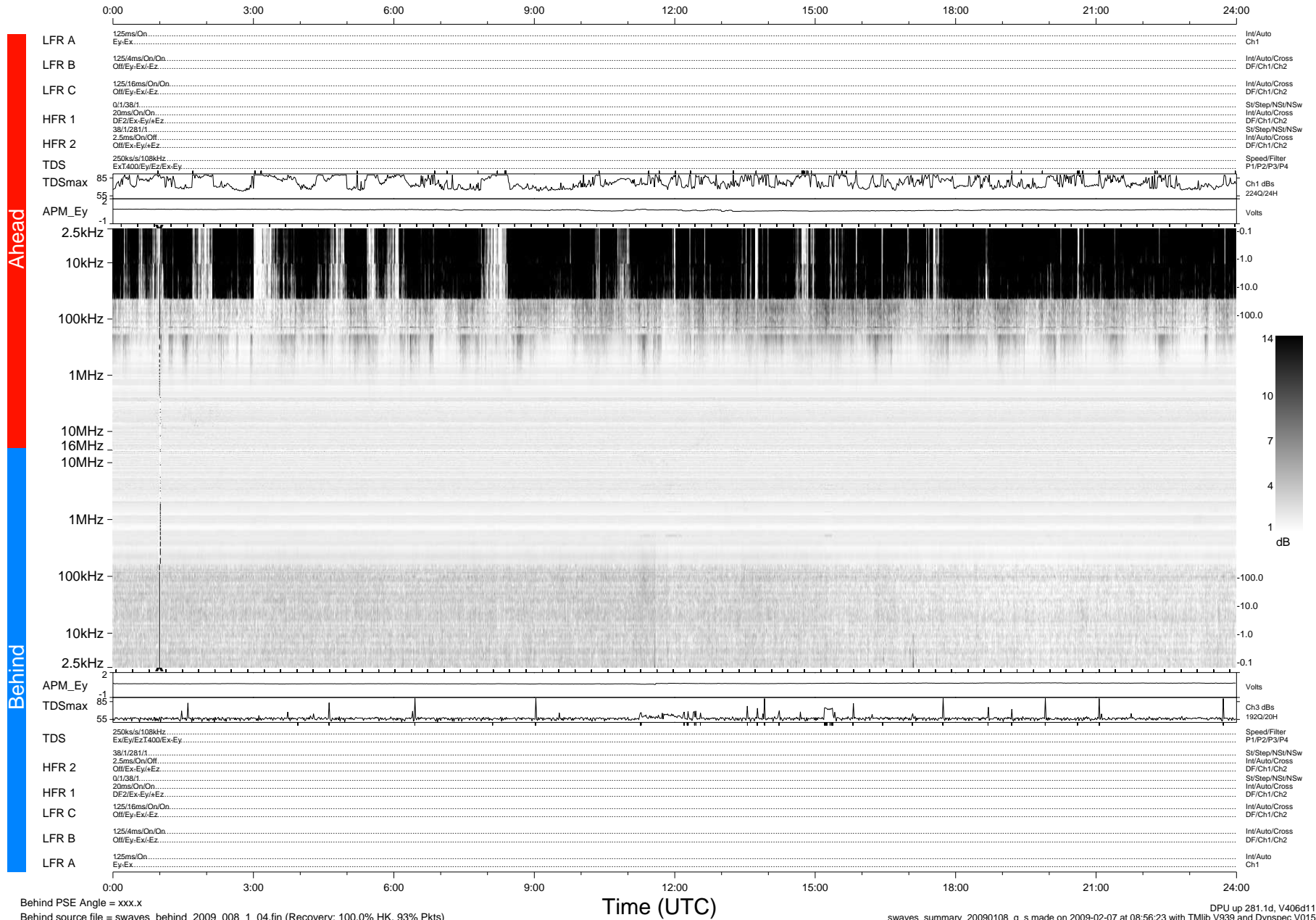


STEREO/WAVES Daily Summary - 08-Jan-2009 (DOY 008)

Ahead source file = swaves_ahead_2009_008_1_04.fin (Recovery:100.0% HK, 99% Pkts)
 Ahead PSE Angle = xxx.x

DPU up 15.4d, V406d10



Behind PSE Angle = xxx.x
 Behind source file = swaves_behind_2009_008_1_04.fin (Recovery: 100.0% HK, 93% Pkts)

DPU up 281.1d, V406d11
 swaves_summary_20090108_g_s made on 2009-02-07 at 08:56:23 with TMIb V939 and Dynspec V015