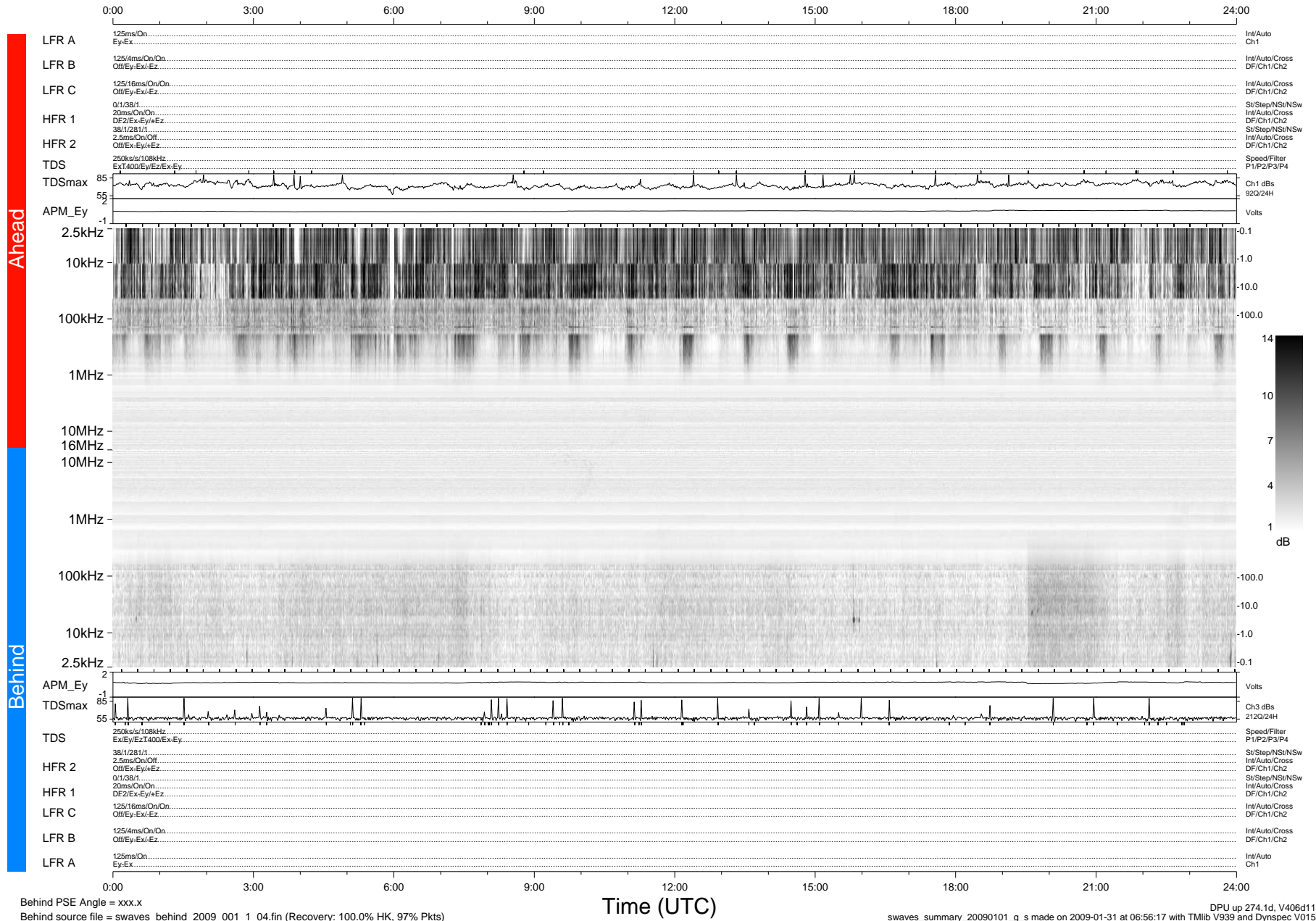


# STEREO/WAVES Daily Summary - 01-Jan-2009 (DOY 001)

Ahead source file = swaves\_ahead\_2009\_001\_1\_04.fin (Recovery:100.0% HK, 79% Pkts)  
 Ahead PSE Angle = xxx.x

DPU up 8.4d, V406d10



Behind PSE Angle = xxx.x

Behind source file = swaves\_behind\_2009\_001\_1\_04.fin (Recovery: 100.0% HK, 97% Pkts)

Time (UTC)

DPU up 274.1d, V406d11  
 swaves\_summary\_20090101\_g\_s made on 2009-01-31 at 06:56:17 with TMlib V939 and Dynspec V015