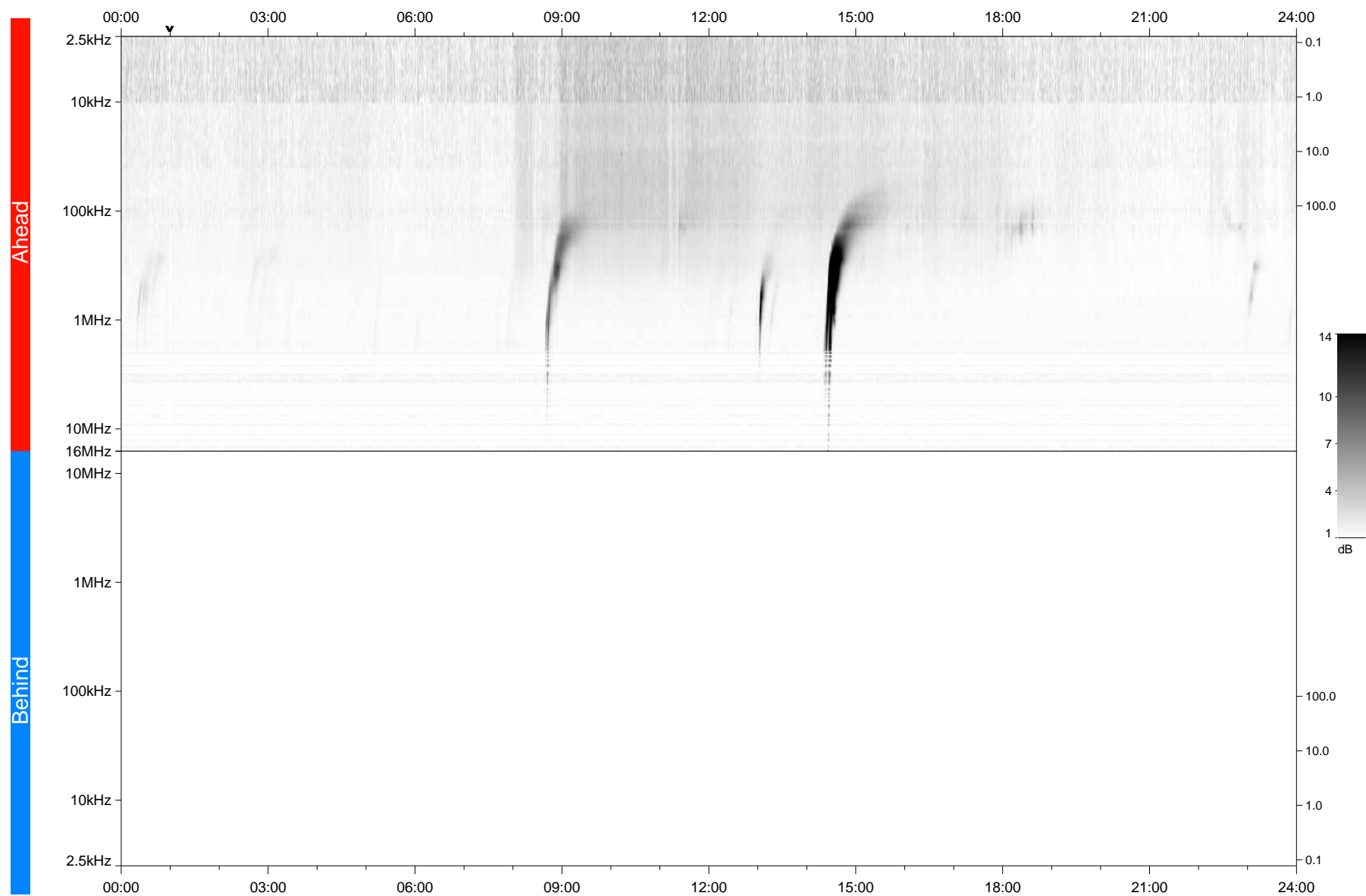


STEREO/WAVES Daily Summary - 10-Apr-2022 (DOY 100)

Ahead source file: swaves_ahead_2022_100_1_06.fin
Ahead PSE Angle: -32.5°



Behind PSE Angle: 29.2°
Behind source file: No STEREO-B data

Time (UTC)

file: stereo_swaves_daily-summary_gray_20220410_v04
made by: space.umn.edu on macOS with TDL 8.8.2 on 2022-09-30 19:49:56, with Tlib V945 / dynspec V311