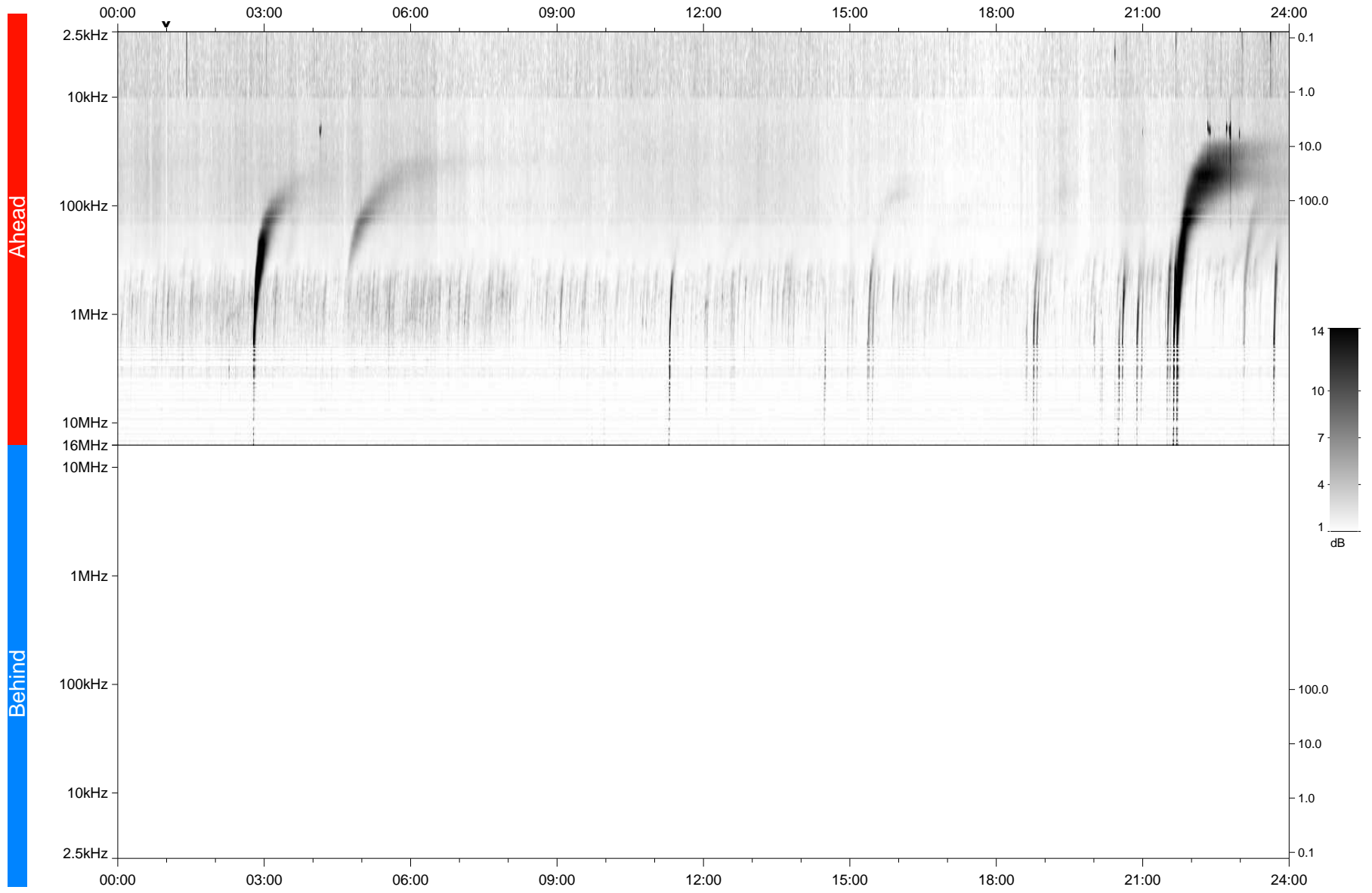


STEREO/WAVES Daily Summary - 28-Dec-2021 (DOY 362)

Ahead source file: swaves_ahead_2021_362_1_06.fin
Ahead PSE Angle: -35.5°



Behind PSE Angle: 33.4°
Behind source file: No STEREO-B data

Time (UTC)

file: stereo_swaves_daily-summary_gray_20211228_v03
made by: space.umn.edu on macOS with TDL 8.8.2 on 2022-08-24 22:04:18, with TLib V945 / dynspec V311