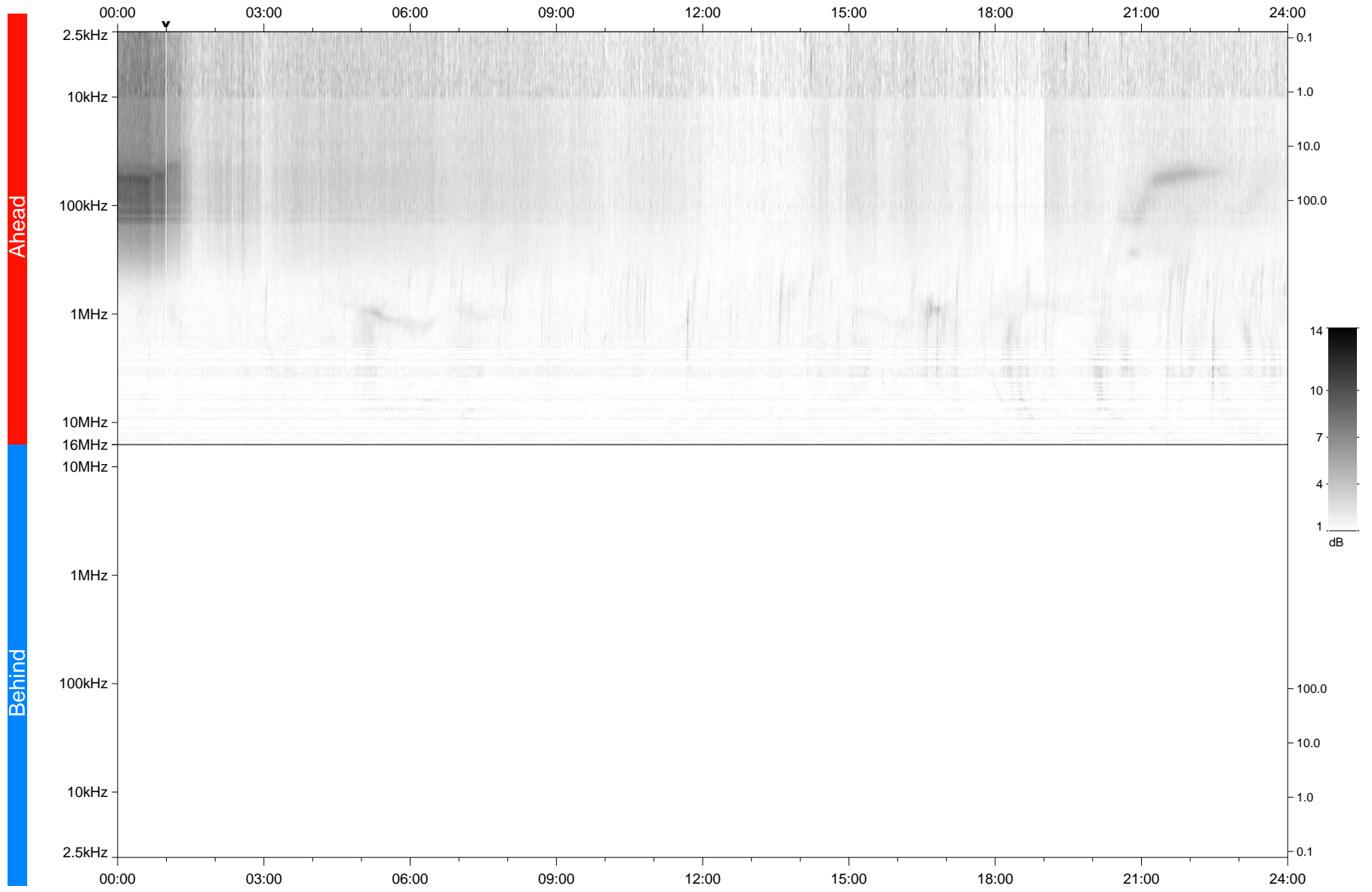


STEREO/WAVES Daily Summary - 26-Dec-2021 (DOY 360)

Ahead source file: swaves_ahead_2021_360_1_05.fin
Ahead PSE Angle: -35.5°



Behind PSE Angle: 33.5°
Behind source file: No STEREO-B data

Time (UTC)

file: stereo_swaves_daily-summary_gray_20211226_v04
made by: space.umn.edu on macOS with IDL 8.8.2 on 2022-10-02 21:20:58, with TMLib V945 / dynspec V311