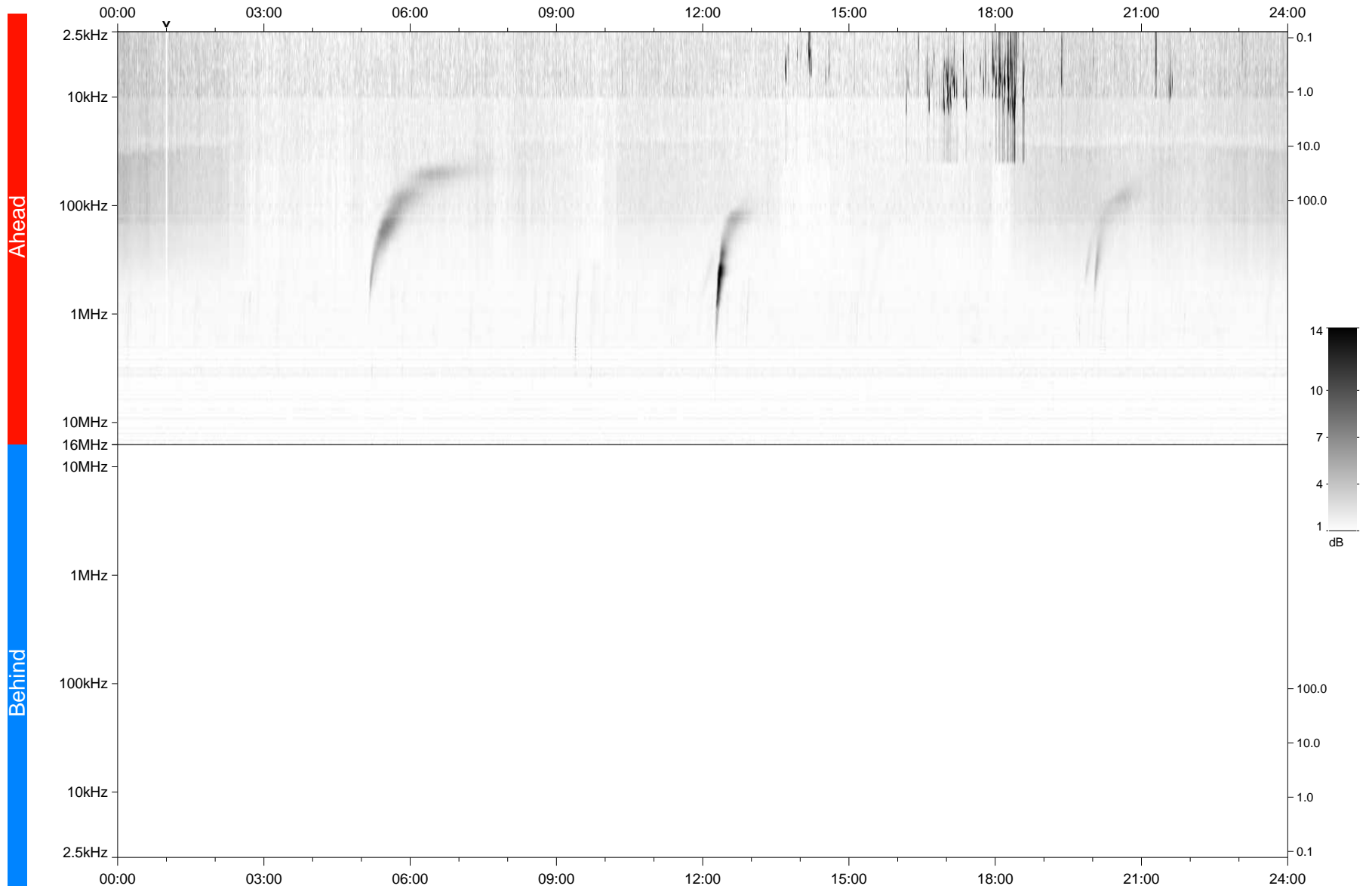


STEREO/WAVES Daily Summary - 24-Dec-2021 (DOY 358)

Ahead source file: swaves_ahead_2021_358_1_05.fin
Ahead PSE Angle: -35.6°



Behind PSE Angle: 33.4°
Behind source file: No STEREO-B data

Time (UTC)

file: stereo_swaves_daily-summary_gray_20211224_v04
made by: space.umn.edu on macOS with TDL 8.8.2 on 2022-10-02 21:17:56, with TLib V945 / dynspec V311