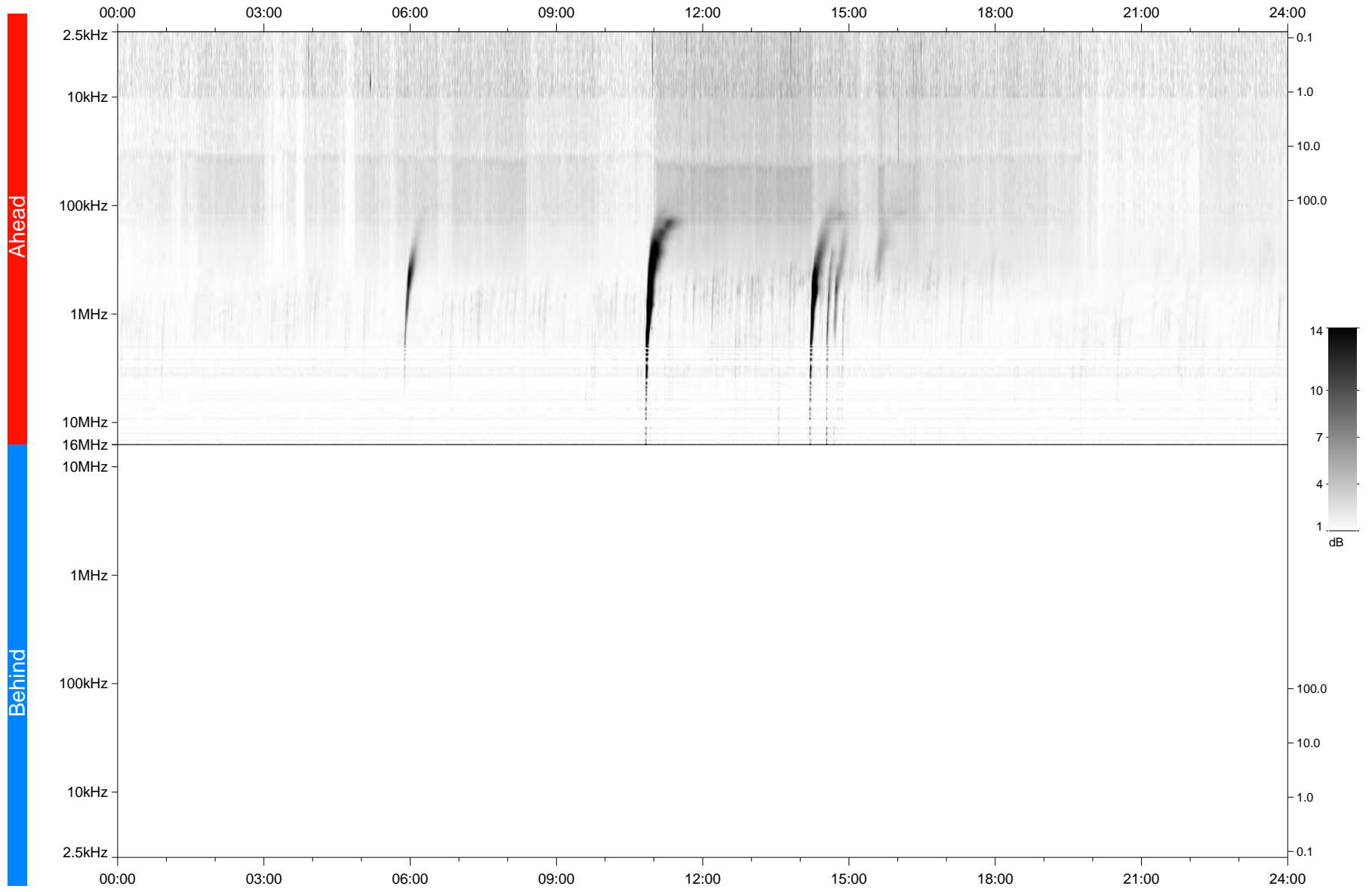


STEREO/WAVES Daily Summary - 15-Dec-2021 (DOY 349)

Ahead source file: swaves_ahead_2021_349_1_06.fin
Ahead PSE Angle: -35.8°



Behind PSE Angle: 33.6°
Behind source file: No STEREO-B data

Time (UTC)

file: stereo_swaves_daily-summary_gray_20211215_v03
made by: space.umn.edu on macOS with TDL 8.8.2 on 2022-08-24 21:46:35, with TLib V945 / dynspec V311