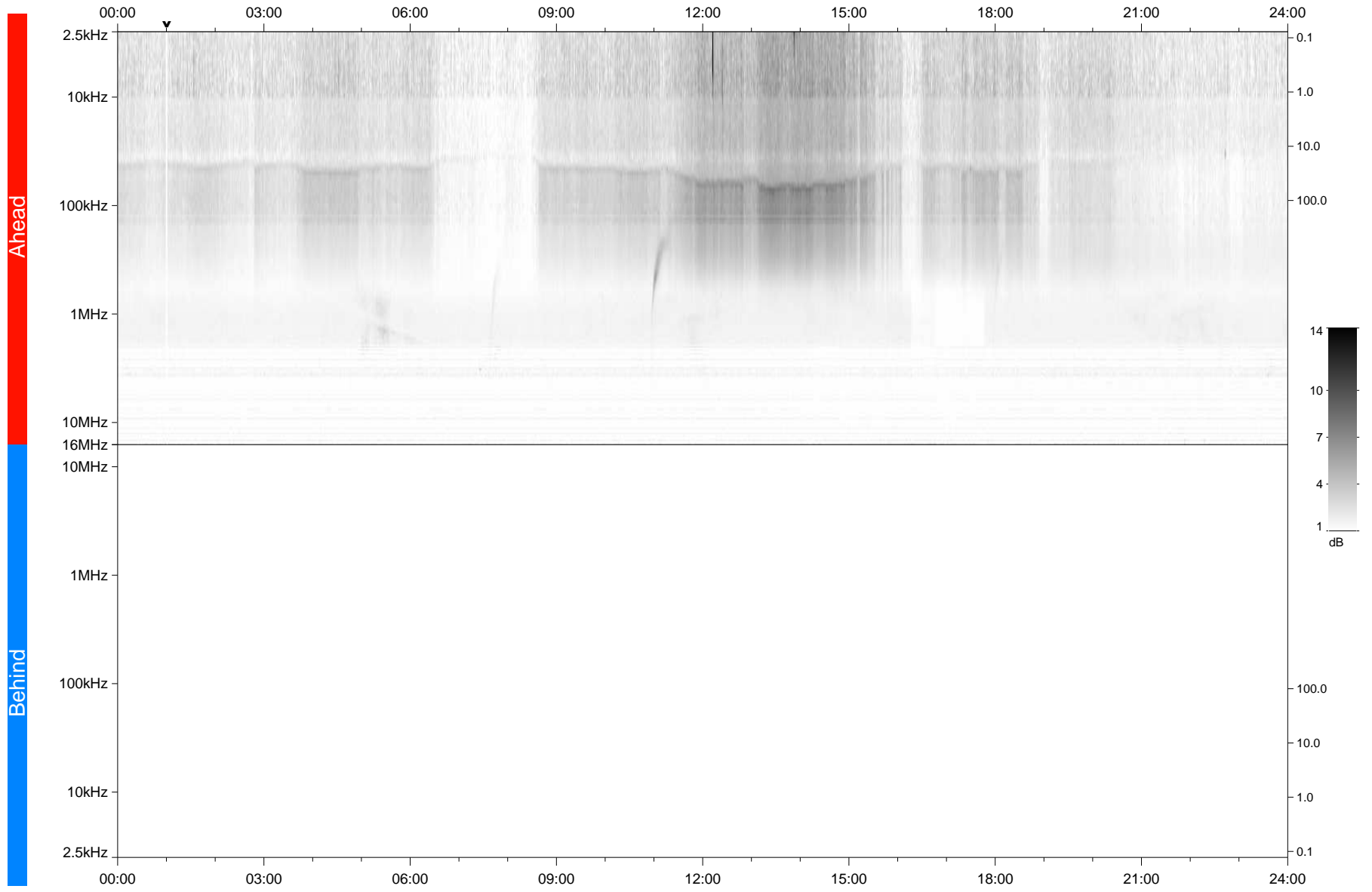


STEREO/WAVES Daily Summary - 10-Dec-2021 (DOY 344)

Ahead source file: swaves_ahead_2021_344_1_05.fin
Ahead PSE Angle: -35.9°



Behind PSE Angle: 33.7°
Behind source file: No STEREO-B data

Time (UTC)

file: stereo_swaves_daily-summary_gray_20211210_v03
made by: space.umn.edu on macOS with TDL 8.8.2 on 2022-08-24 21:39:47, with TLib V945 / dynspec V311