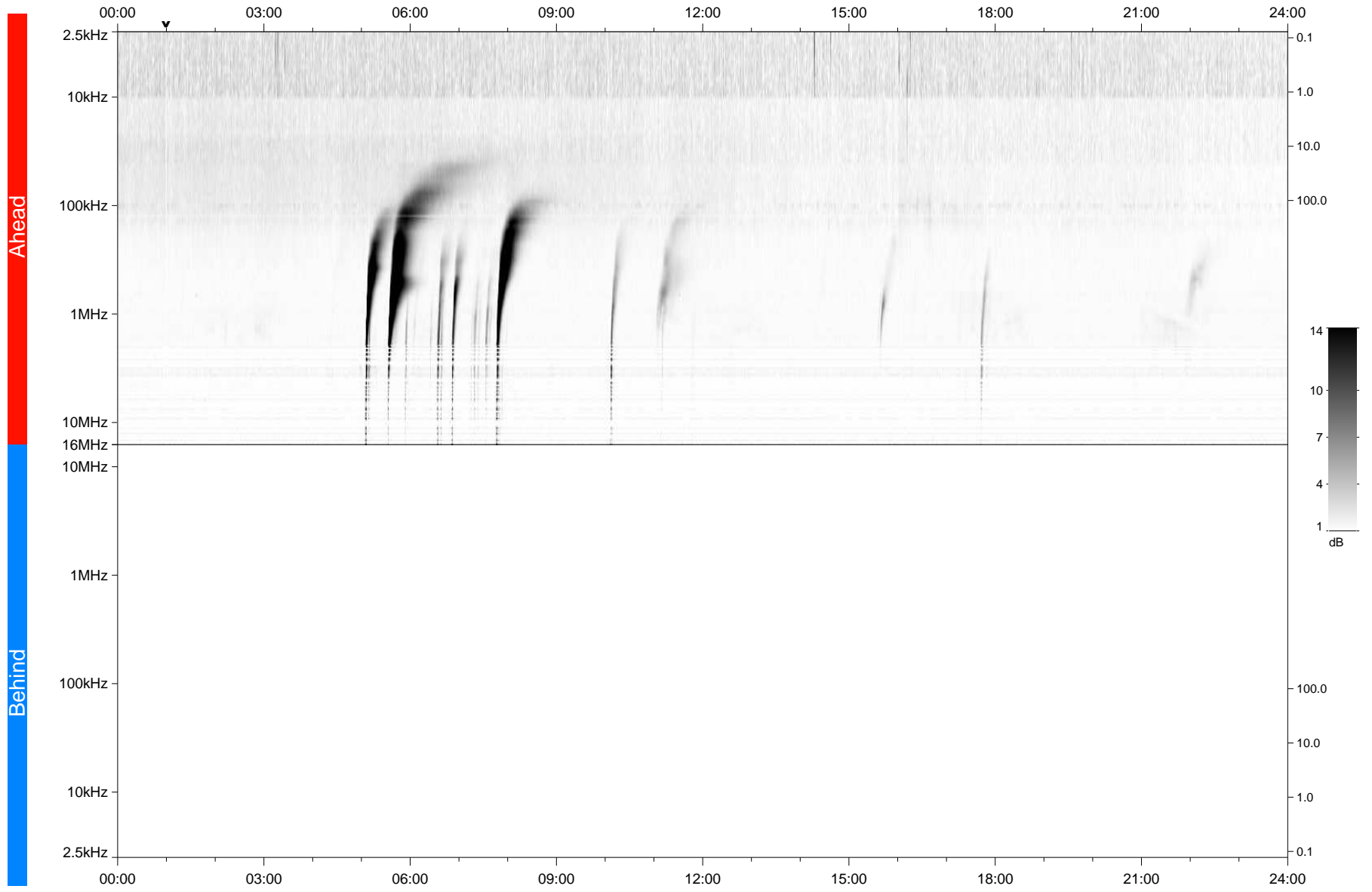


STEREO/WAVES Daily Summary - 06-Dec-2021 (DOY 340)

Ahead source file: swaves_ahead_2021_340_1_05.fin
Ahead PSE Angle: -36.1°



Behind PSE Angle: 33.6°
Behind source file: No STEREO-B data

Time (UTC)

file: stereo_swaves_daily-summary_gray_20211206_v03
made by: space.umn.edu on macOS with TDL 8.8.2 on 2022-08-24 21:34:20, with TMLib V945 / dynspec V311