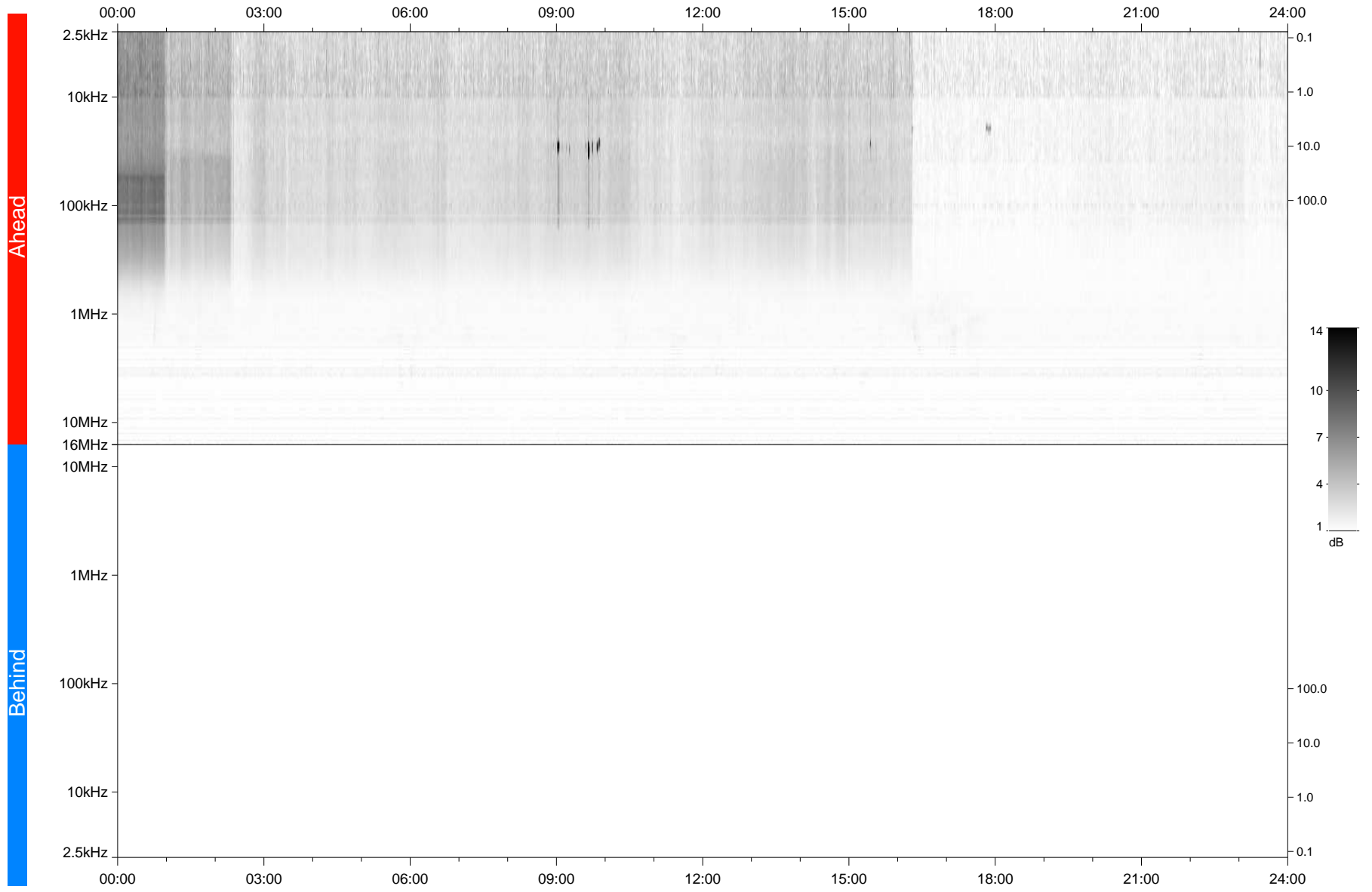


STEREO/WAVES Daily Summary - 29-Nov-2021 (DOY 333)

Ahead source file: swaves_ahead_2021_333_1_06.fin
Ahead PSE Angle: -36.3°



Behind PSE Angle: 33.7°
Behind source file: No STEREO-B data

Time (UTC)

file: stereo_swaves_daily-summary_gray_20211129_v04
made by: space.umn.edu on macOS with TDL 8.8.2 on 2022-10-02 20:40:33, with TMLib V945 / dynspec V311