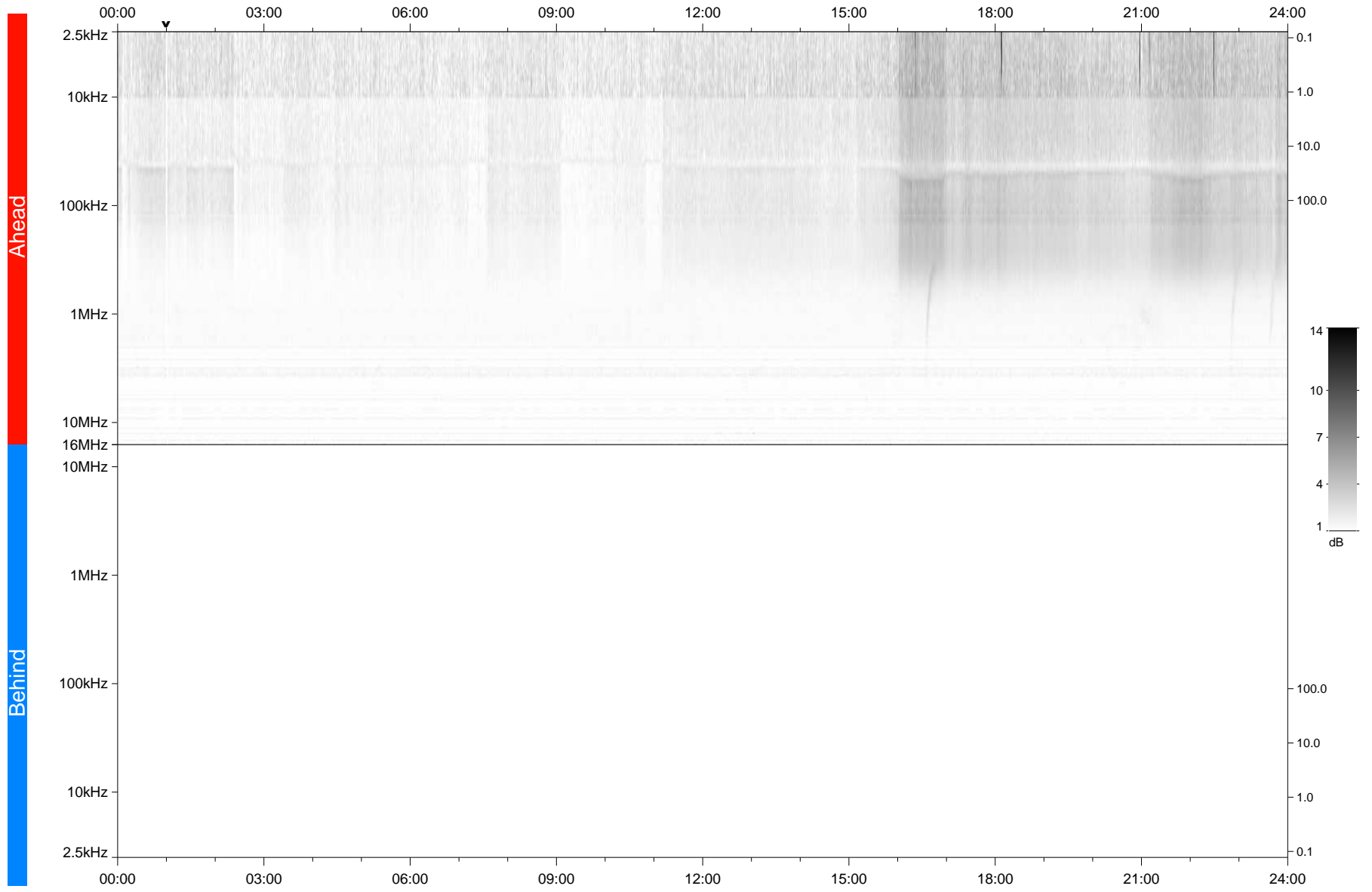


STEREO/WAVES Daily Summary - 28-Nov-2021 (DOY 332)

Ahead source file: swaves_ahead_2021_332_1_06.fin
Ahead PSE Angle: -36.3°



Behind PSE Angle: 33.7°
Behind source file: No STEREO-B data

Time (UTC)

file: stereo_swaves_daily-summary_gray_20211128_v03
made by: space.umn.edu on macOS with IDL 8.8.2 on 2022-08-24 21:23:27, with TLib V945 / dynspec V311