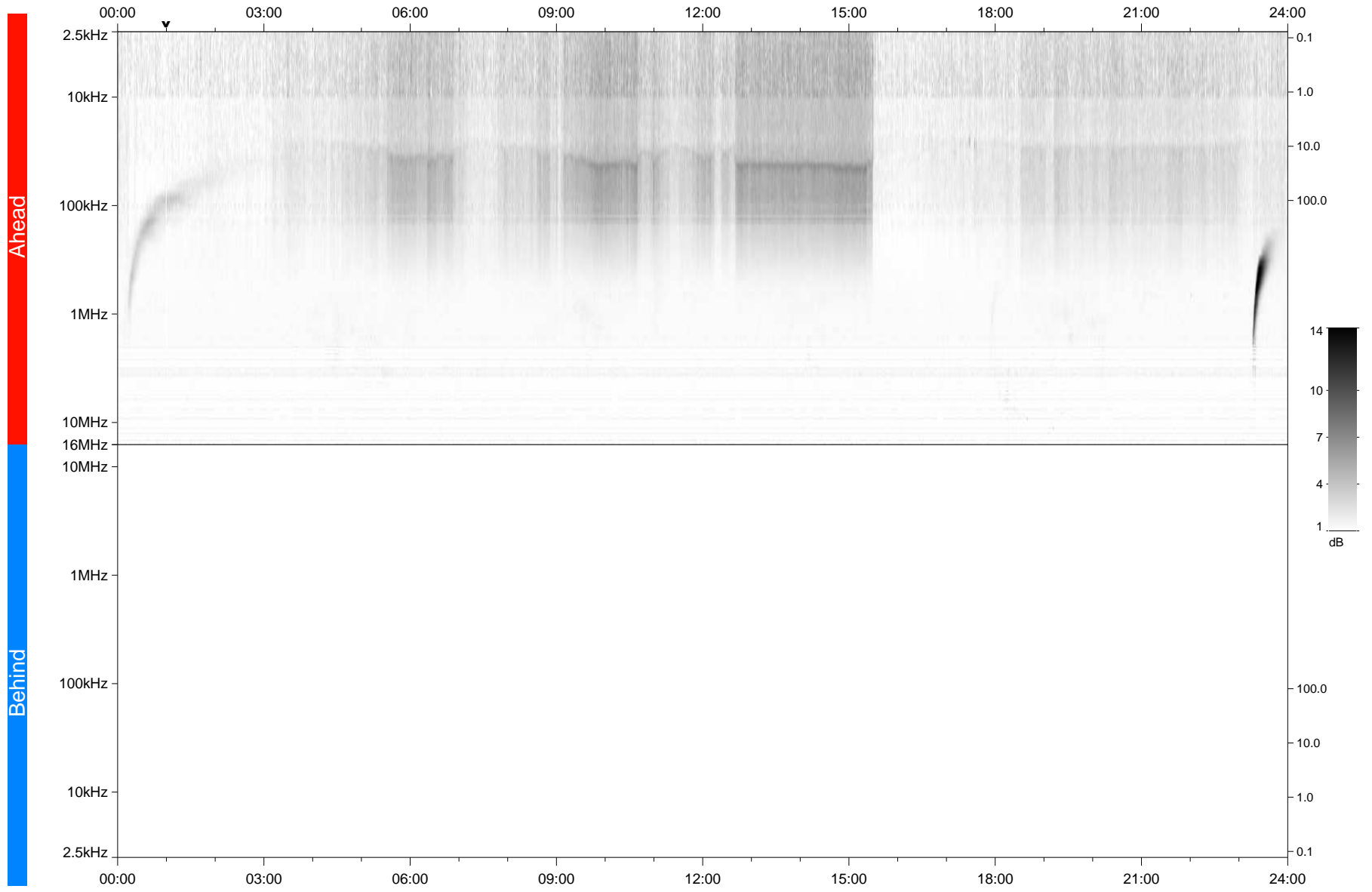


STEREO/WAVES Daily Summary - 26-Nov-2021 (DOY 330)

Ahead source file: swaves_ahead_2021_330_1_06.fin
Ahead PSE Angle: -36.3°



Behind PSE Angle: 33.8°
Behind source file: No STEREO-B data

Time (UTC)

file: stereo_swaves_daily-summary_gray_20211126_v04
made by: space.umn.edu on macOS with TDL 8.8.2 on 2022-10-02 20:36:04, with TMLib V945 / dynspec V311