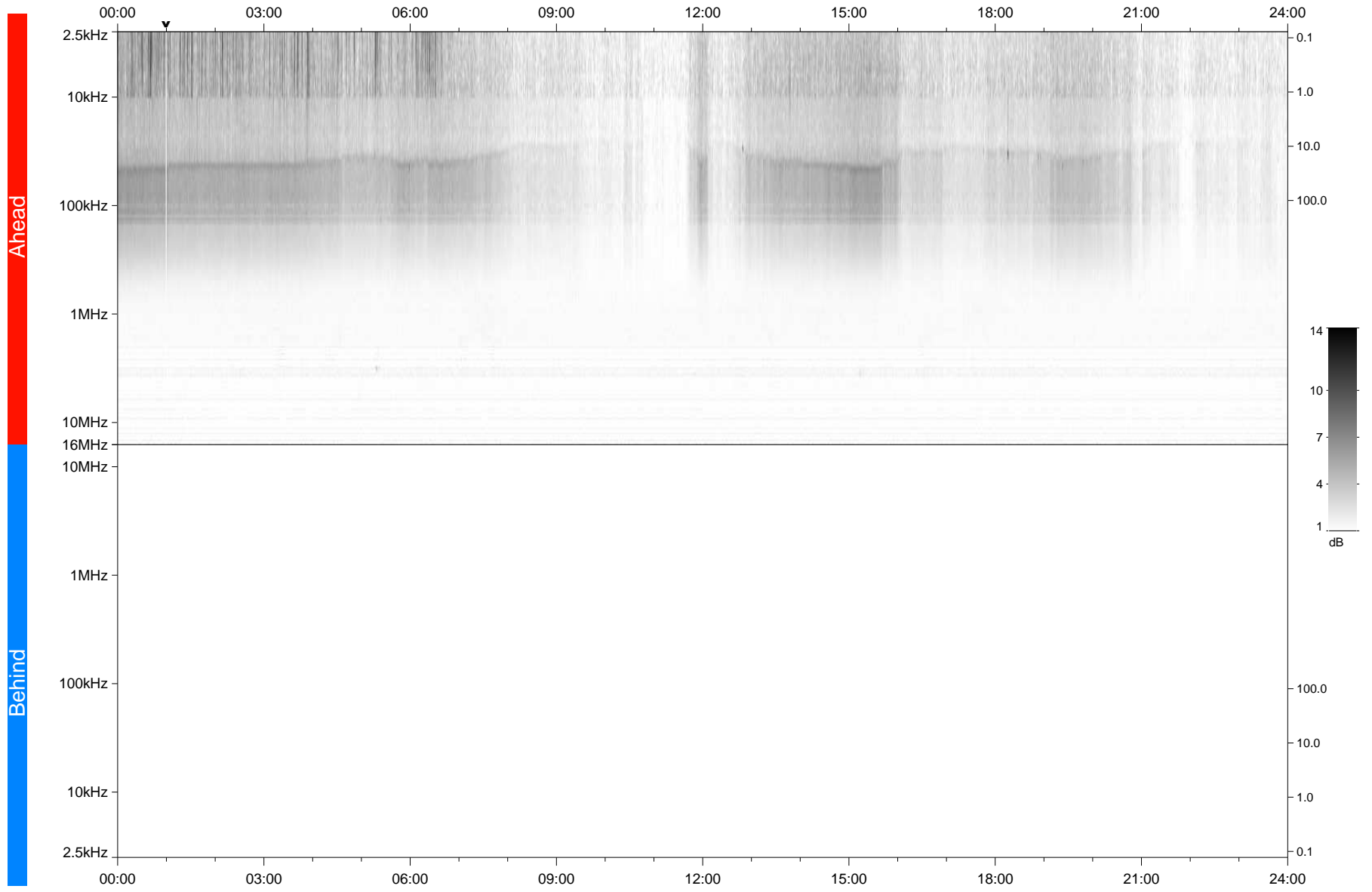


STEREO/WAVES Daily Summary - 24-Nov-2021 (DOY 328)

Ahead source file: swaves_ahead_2021_328_1_05.fin
Ahead PSE Angle: -36.4°



Behind PSE Angle: 33.8°
Behind source file: No STEREO-B data

Time (UTC)

file: stereo_swaves_daily-summary_gray_20211124_v04
made by: space.umn.edu on macOS with TDL 8.8.2 on 2022-10-02 20:33:05, with TLib V945 / dynspec V311