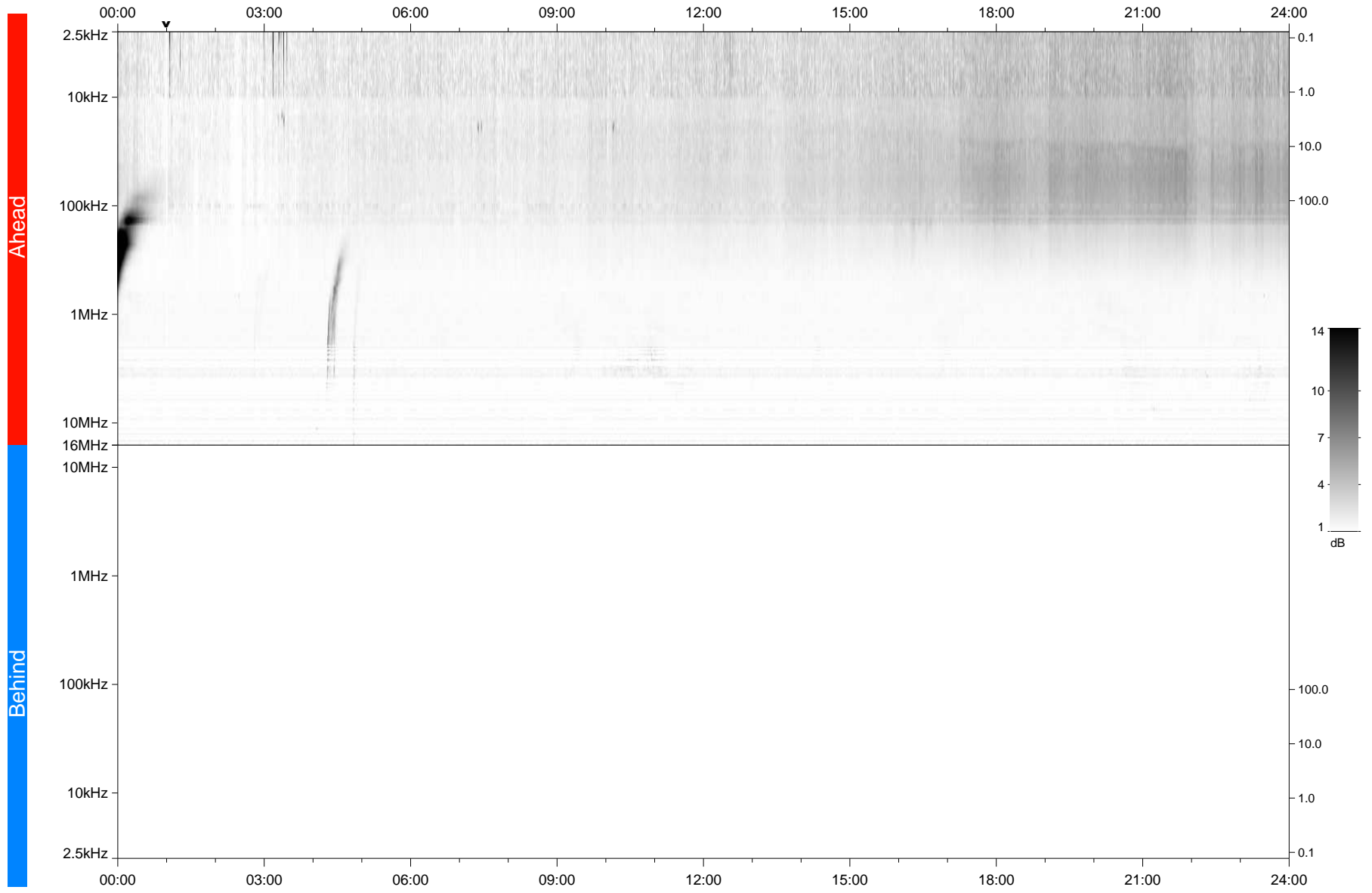


STEREO/WAVES Daily Summary - 22-Nov-2021 (DOY 326)

Ahead source file: swaves_ahead_2021_326_1_05.fin
Ahead PSE Angle: -36.5°



Behind PSE Angle: 33.8°
Behind source file: No STEREO-B data

Time (UTC)

file: stereo_swaves_daily-summary_gray_20211122_v03
made by: space.umn.edu on macOS with TDL 8.8.2 on 2022-08-24 21:15:09, with TLib V945 / dynspec V311