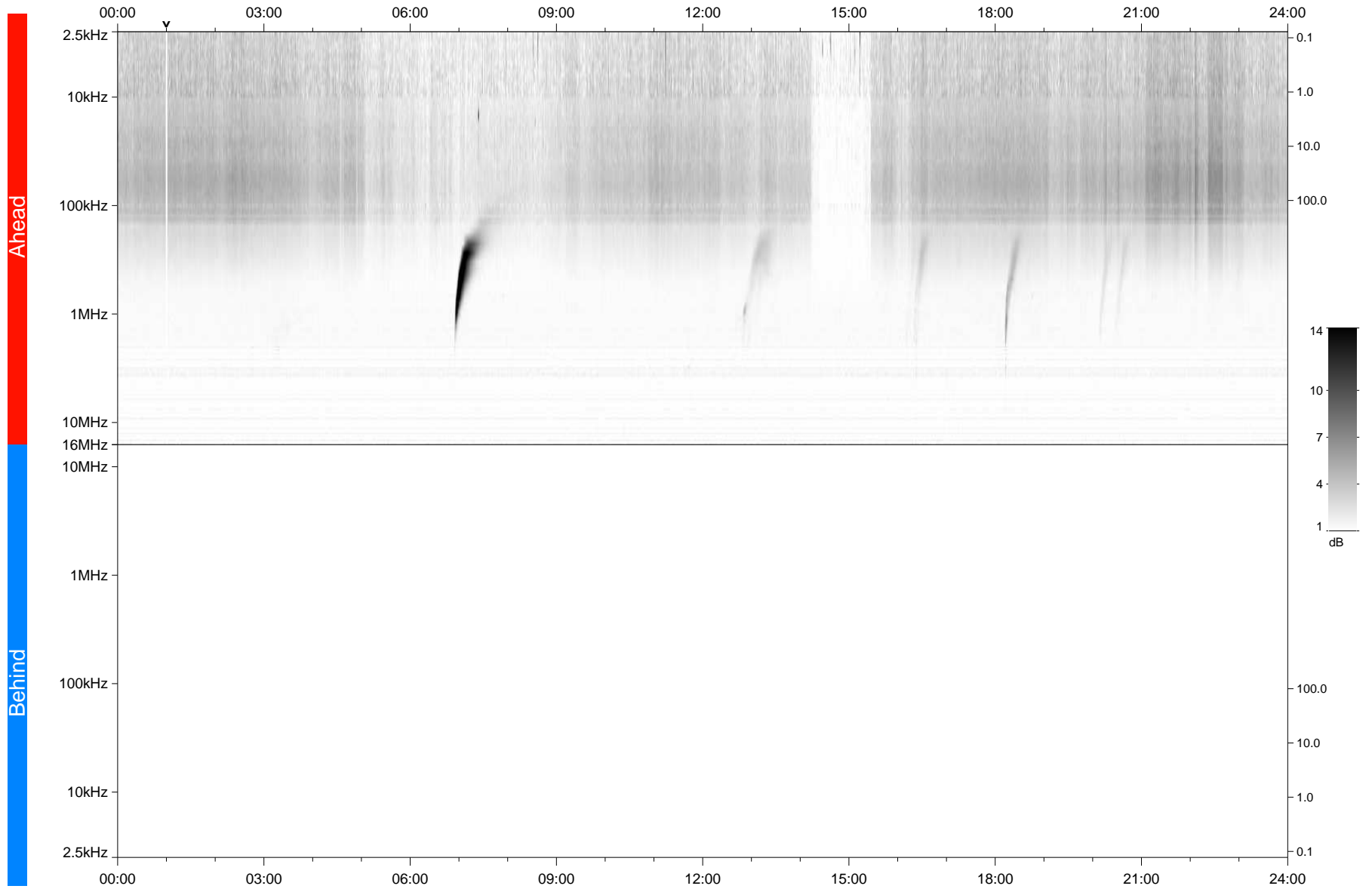


STEREO/WAVES Daily Summary - 18-Nov-2021 (DOY 322)

Ahead source file: swaves_ahead_2021_322_1_05.fin
Ahead PSE Angle: -36.6°



Behind PSE Angle: 34.0°
Behind source file: No STEREO-B data

Time (UTC)

file: stereo_swaves_daily-summary_gray_20211118_v04
made by: space.umn.edu on macOS with IDL 8.8.2 on 2022-10-02 20:24:06, with TMLib V945 / dynspec V311