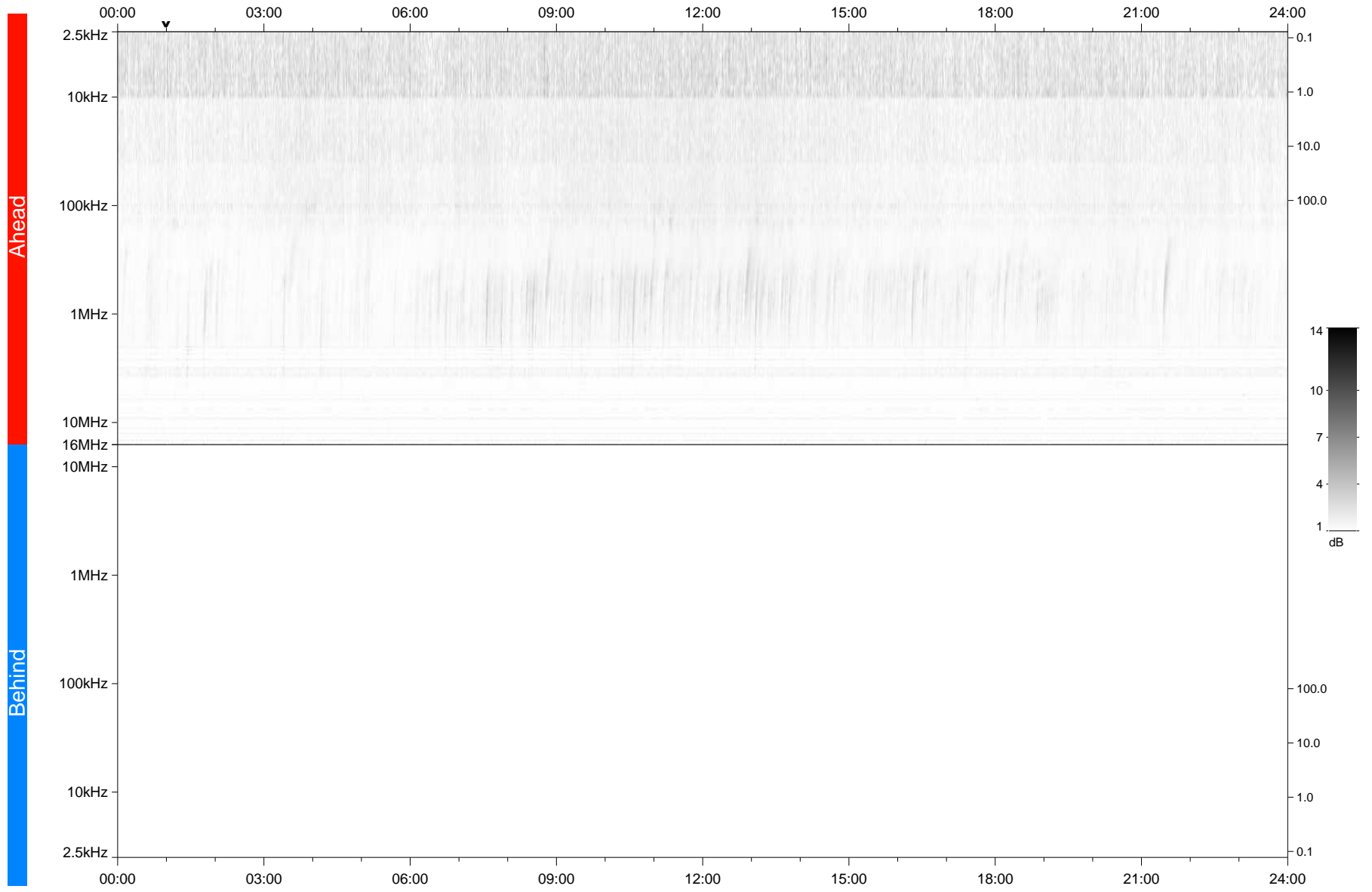


# STEREO/WAVES Daily Summary - 10-Nov-2021 (DOY 314)

Ahead source file: swaves\_ahead\_2021\_314\_1\_05.fin  
Ahead PSE Angle: -37.0°



Behind PSE Angle: 34.0°  
Behind source file: No STEREO-B data

Time (UTC)

file: stereo\_swaves\_daily-summary\_gray\_20211110\_v04  
made by: space.umn.edu on macOS with IDL 8.8.2 on 2022-10-02 20:12:07, with TLib V945 / dynspec V311