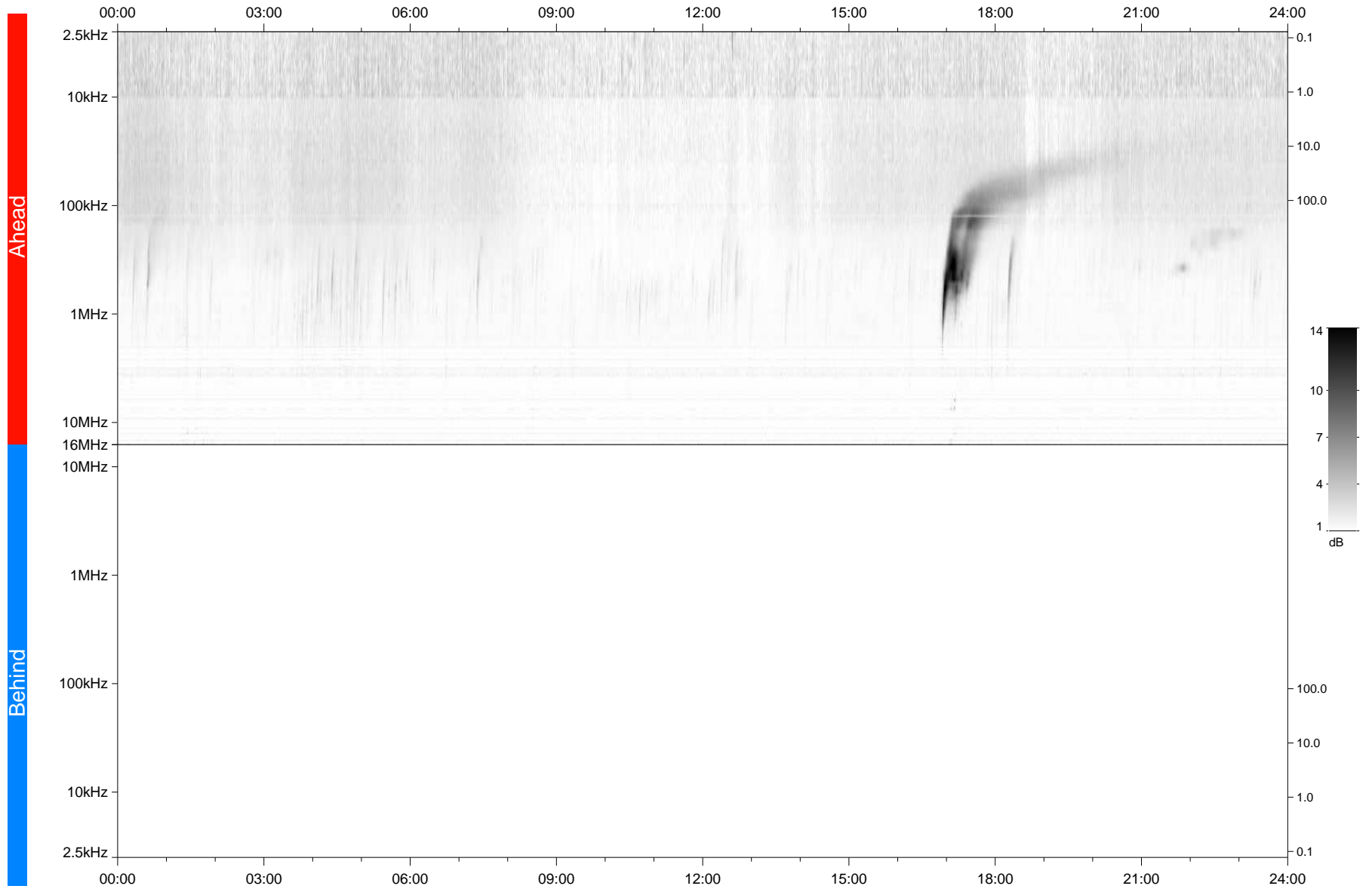


STEREO/WAVES Daily Summary - 09-Nov-2021 (DOY 313)

Ahead source file: swaves_ahead_2021_313_1_06.fin
Ahead PSE Angle: -37.0°



Behind PSE Angle: 34.1°
Behind source file: No STEREO-B data

Time (UTC)

file: stereo_swaves_daily-summary_gray_20211109_v04
made by: space.umn.edu on macOS with TDL 8.8.2 on 2022-10-02 20:10:38, with TLib V945 / dynspec V311