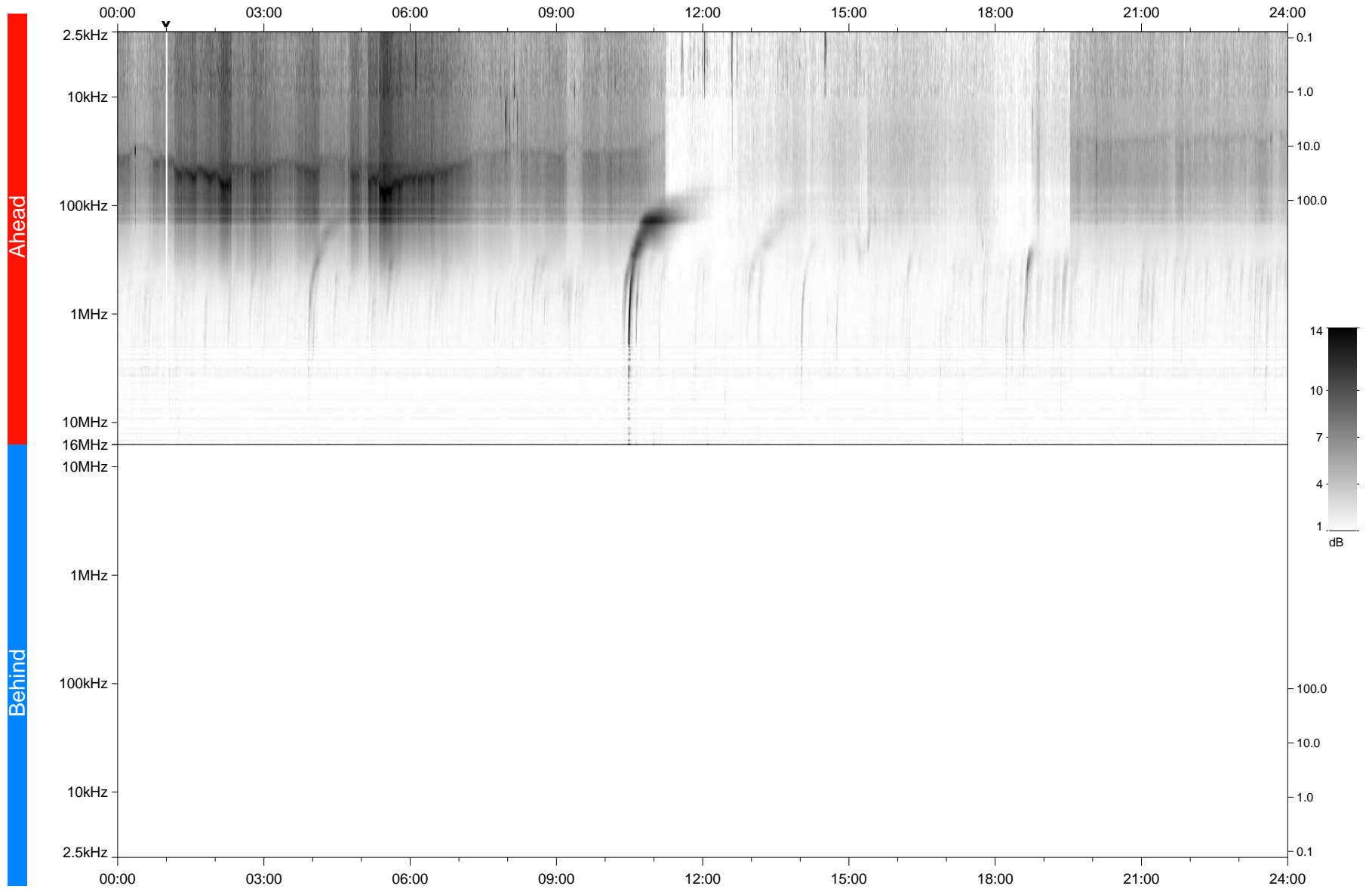


STEREO/WAVES Daily Summary - 06-Nov-2021 (DOY 310)

Ahead source file: swaves_ahead_2021_310_1_06.fin
Ahead PSE Angle: -37.2°



Behind PSE Angle: 34.1°
Behind source file: No STEREO-B data

Time (UTC)

file: stereo_swaves_daily-summary_gray_20211106_v03
made by: space.umn.edu on macOS with IDL 8.8.2 on 2022-08-24 20:53:12, with TMLib V945 / dynspec V311