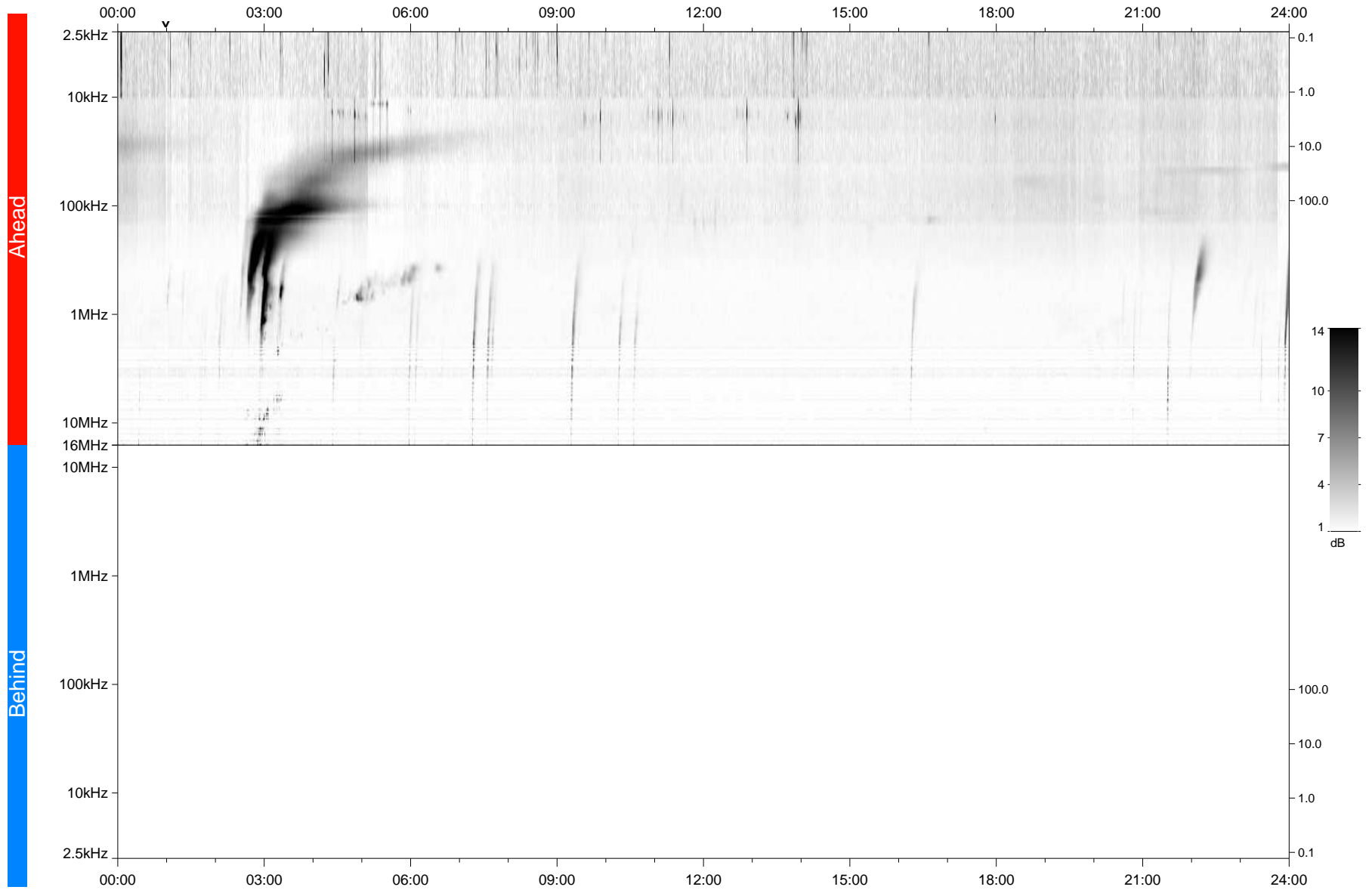


# STEREO/WAVES Daily Summary - 02-Nov-2021 (DOY 306)

Ahead source file: swaves\_ahead\_2021\_306\_1\_05.fin  
Ahead PSE Angle: -37.4°



Behind PSE Angle: 34.2°  
Behind source file: No STEREO-B data

Time (UTC)

file: stereo\_swaves\_daily-summary\_gray\_20211102\_v04  
made by: space.umn.edu on macOS with IDL 8.8.2 on 2022-10-02 20:00:05, with TMLib V945 / dynspec V311