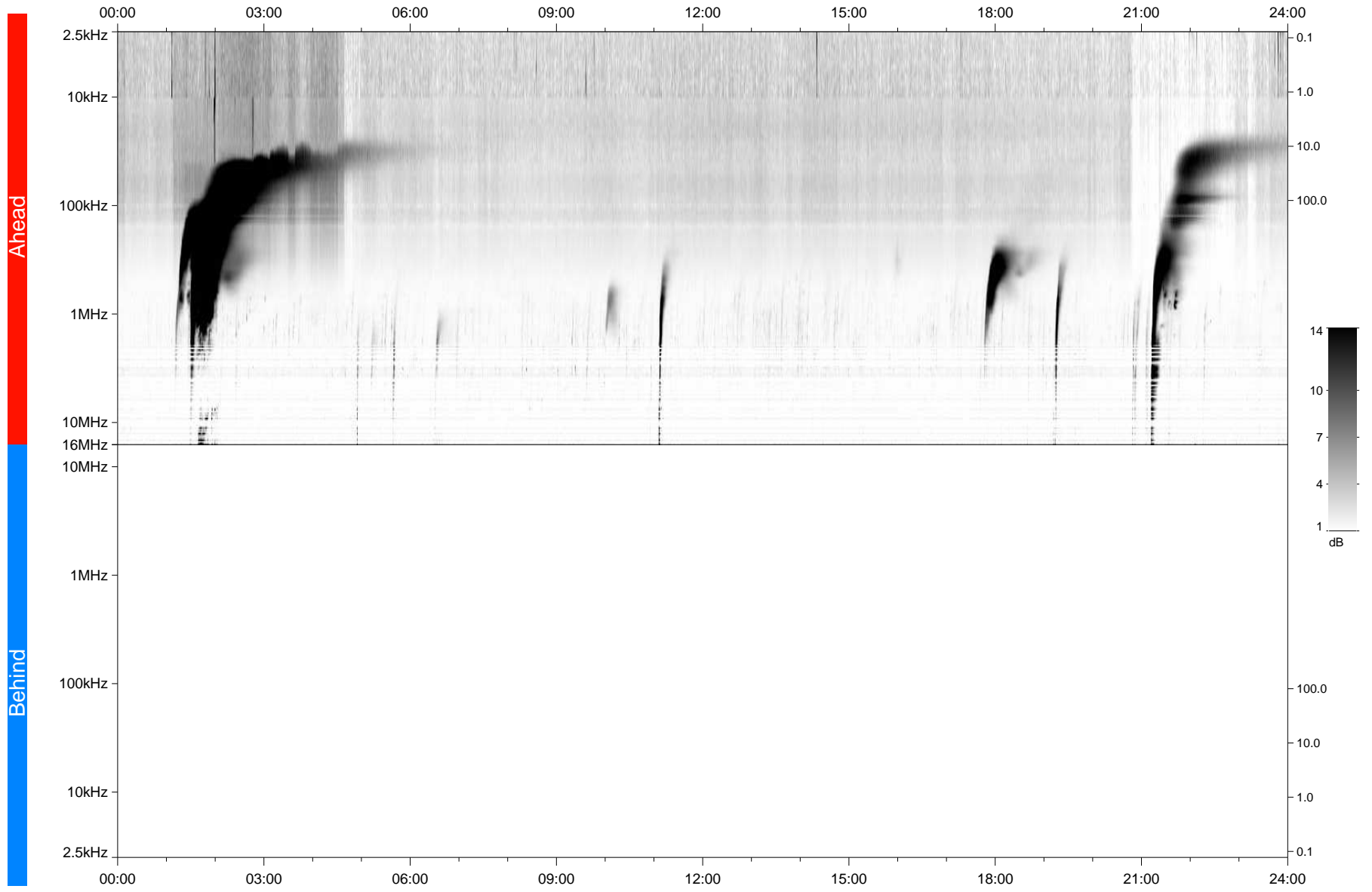


STEREO/WAVES Daily Summary - 01-Nov-2021 (DOY 305)

Ahead source file: swaves_ahead_2021_305_1_05.fin
Ahead PSE Angle: -37.5°



Behind PSE Angle: 34.2°
Behind source file: No STEREO-B data

Time (UTC)

file: stereo_swaves_daily-summary_gray_20211101_v04
made by: space.umn.edu on macOS with IDL 8.8.2 on 2022-10-02 19:58:35, with TLib V945 / dynspec V311