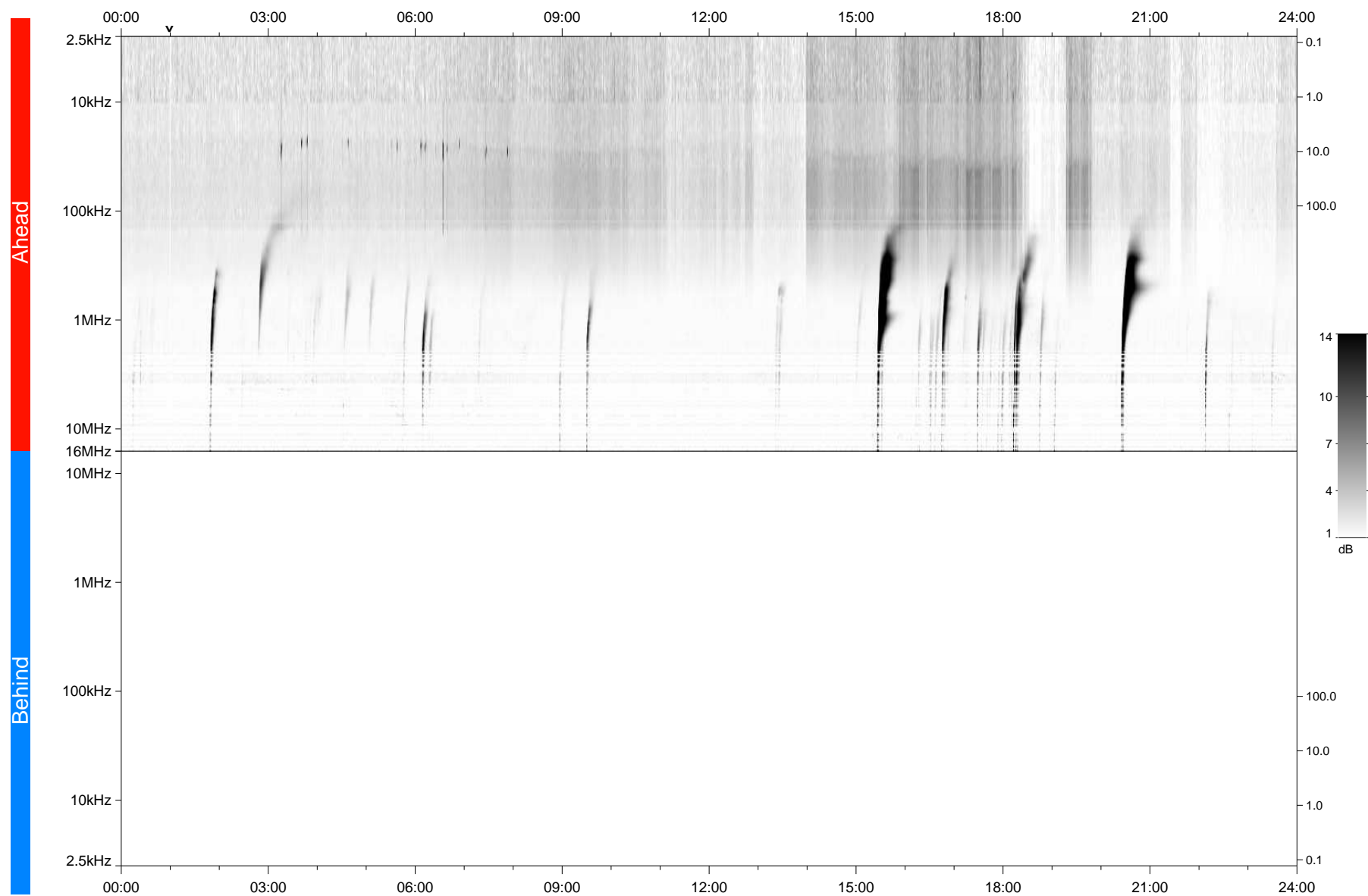


STEREO/WAVES Daily Summary - 31-Oct-2021 (DOY 304)

Ahead source file: swaves_ahead_2021_304_1_05.fin
Ahead PSE Angle: -37.5°



Behind PSE Angle: 34.2°
Behind source file: No STEREO-B data

Time (UTC)

file: stereo_swaves_daily-summary_gray_20211031_v04
made by: space.umn.edu on macOS with TDL 8.8.2 on 2022-10-02 19:57:07, with TLib V945 / dynspec V311