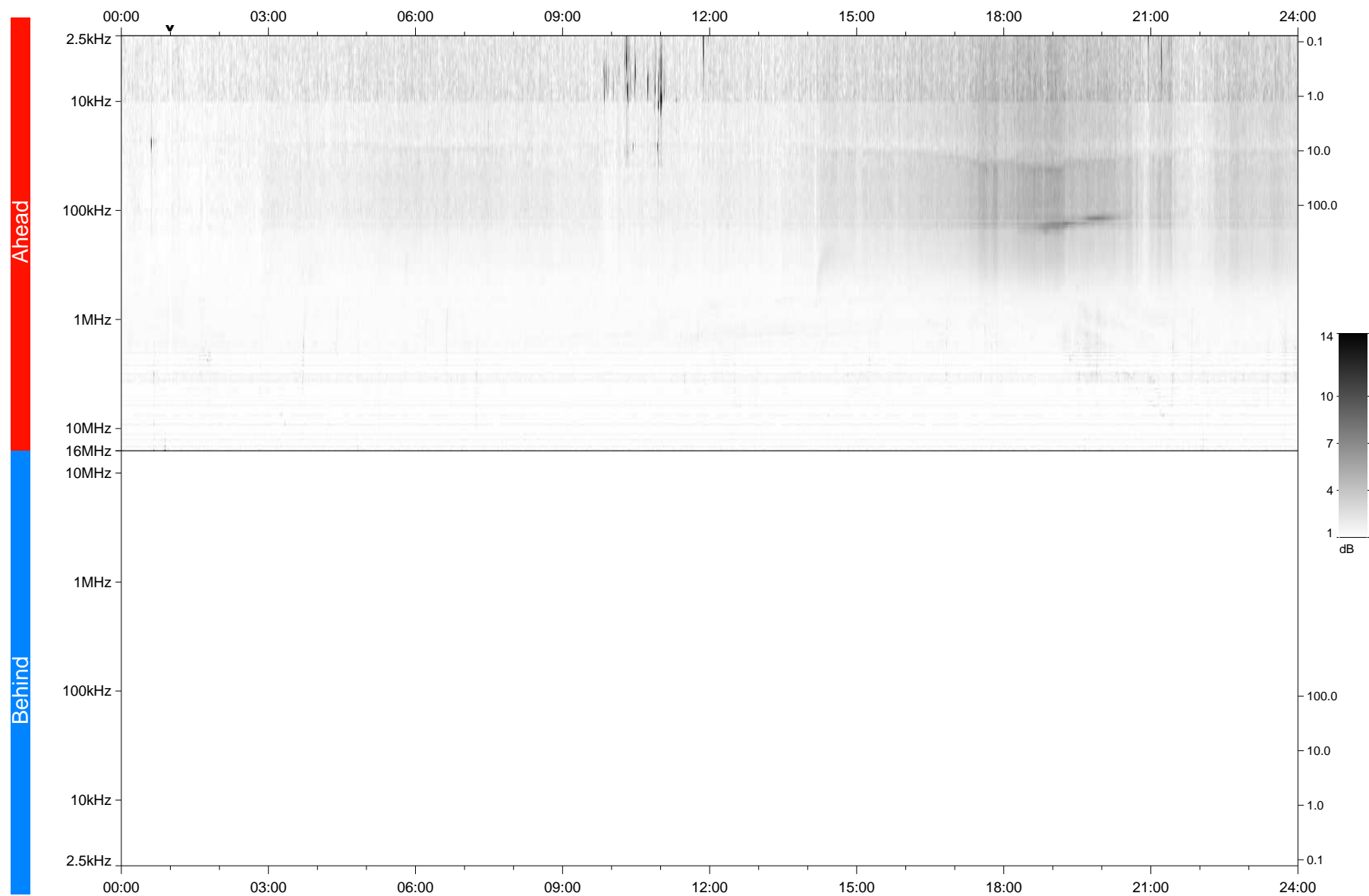


STEREO/WAVES Daily Summary - 29-Oct-2021 (DOY 302)

Ahead source file: swaves_ahead_2021_302_1_05.fin
Ahead PSE Angle: -37.6°



Behind PSE Angle: 34.3°
Behind source file: No STEREO-B data

Time (UTC)

file: stereo_swaves_daily-summary_gray_20211029_v03
made by: space.umn.edu on macOS with TDL 8.8.2 on 2022-08-24 20:40:42, with TLib V945 / dynspec V311