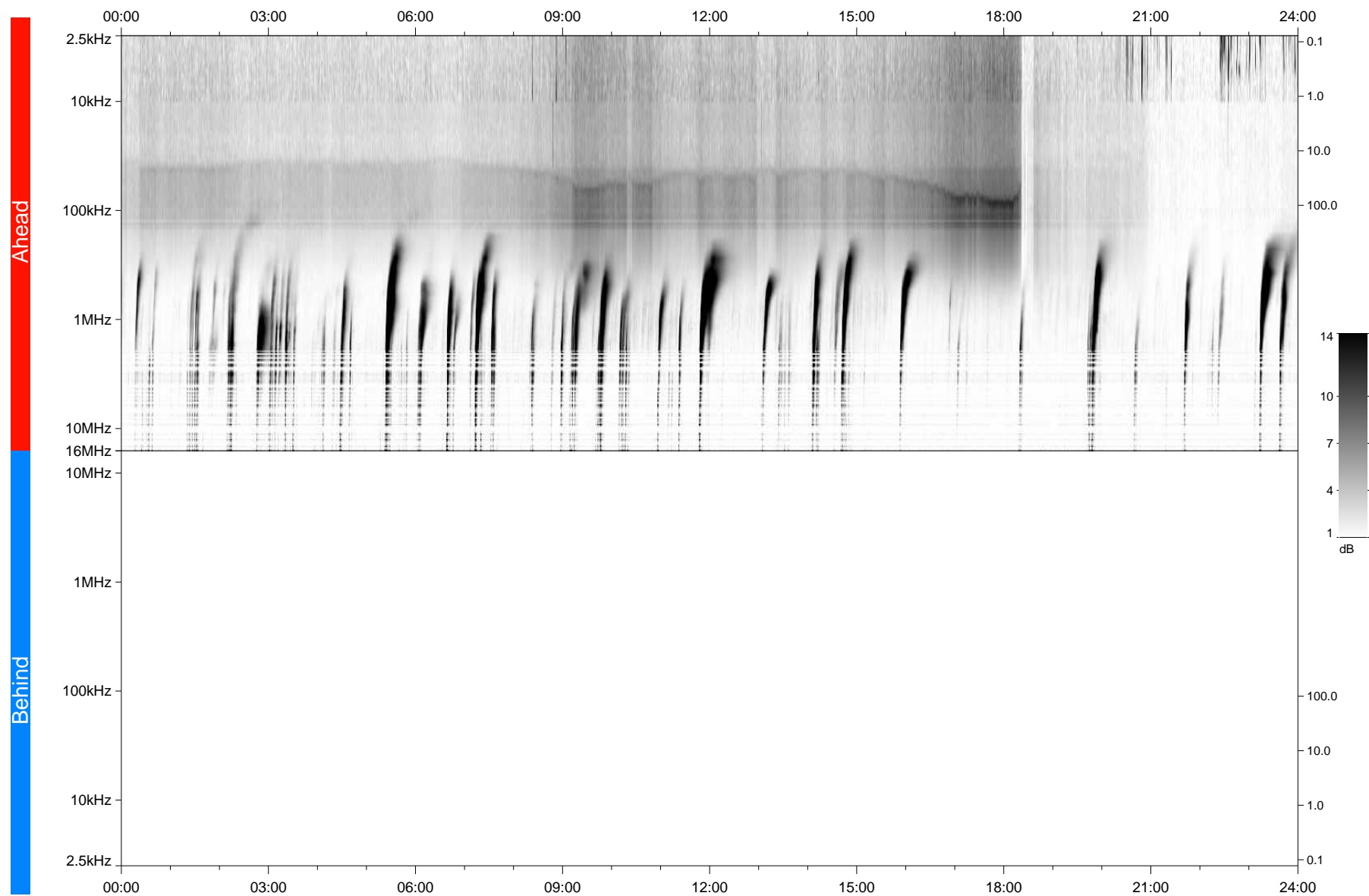


STEREO/WAVES Daily Summary - 26-Oct-2021 (DOY 299)

Ahead source file: swaves_ahead_2021_299_1_05.fin
Ahead PSE Angle: -37.6°



Behind PSE Angle: 34.4°
Behind source file: No STEREO-B data

Time (UTC)

file: stereo_swaves_daily-summary_gray_20211026_v03
made by: space.umn.edu on macOS with IDL 8.8.2 on 2022-08-24 20:36:38, with TLib V945 / dynspec V311