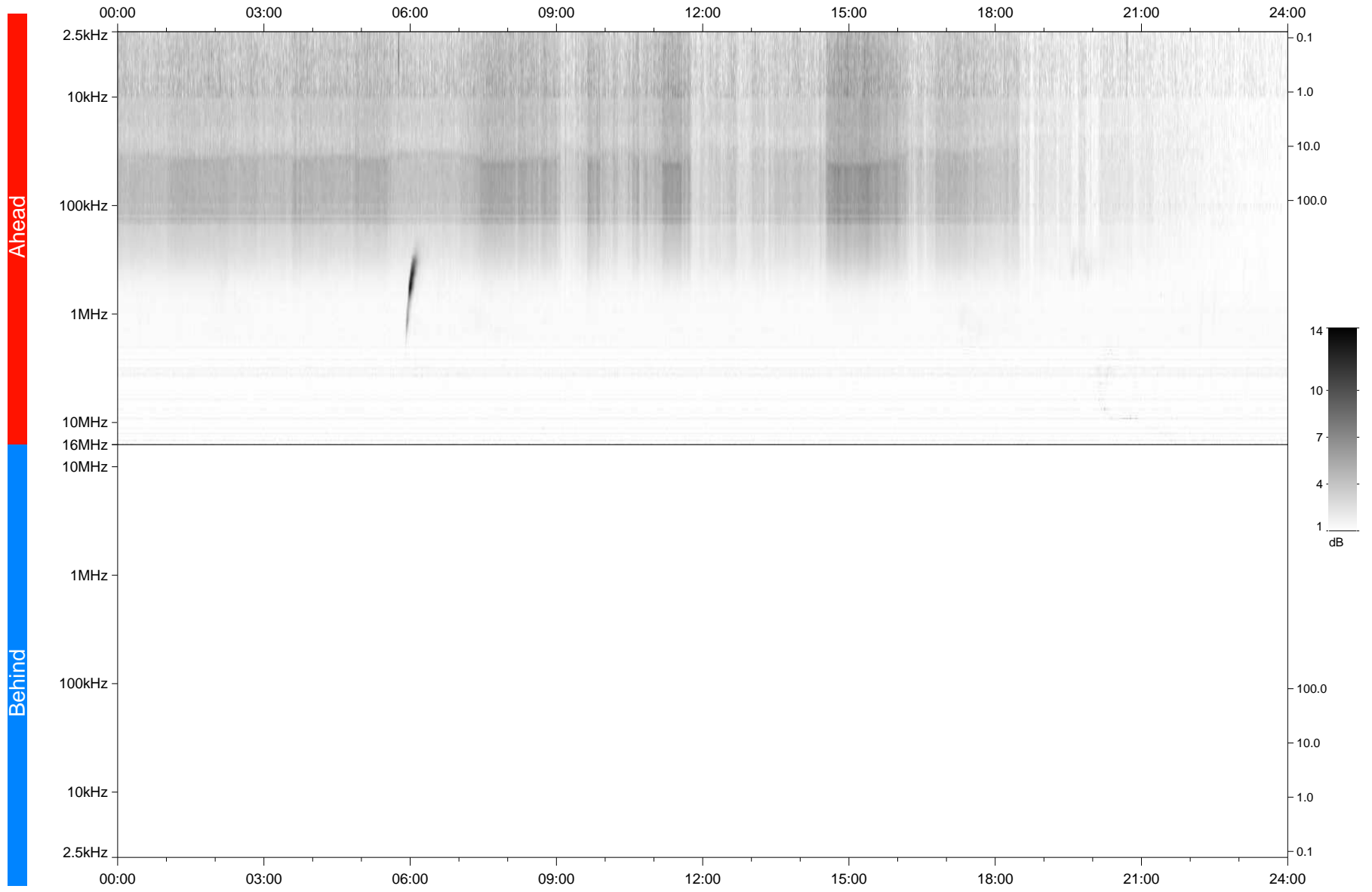


STEREO/WAVES Daily Summary - 18-Oct-2021 (DOY 291)

Ahead source file: swaves_ahead_2021_291_1_05.fin
Ahead PSE Angle: -38.2°



Behind PSE Angle: 34.6°
Behind source file: No STEREO-B data

Time (UTC)

file: stereo_swaves_daily-summary_gray_20211018_v03
made by: space.umn.edu on macOS with IDL 8.8.2 on 2022-08-24 20:25:44, with TMLib V945 / dynspec V311