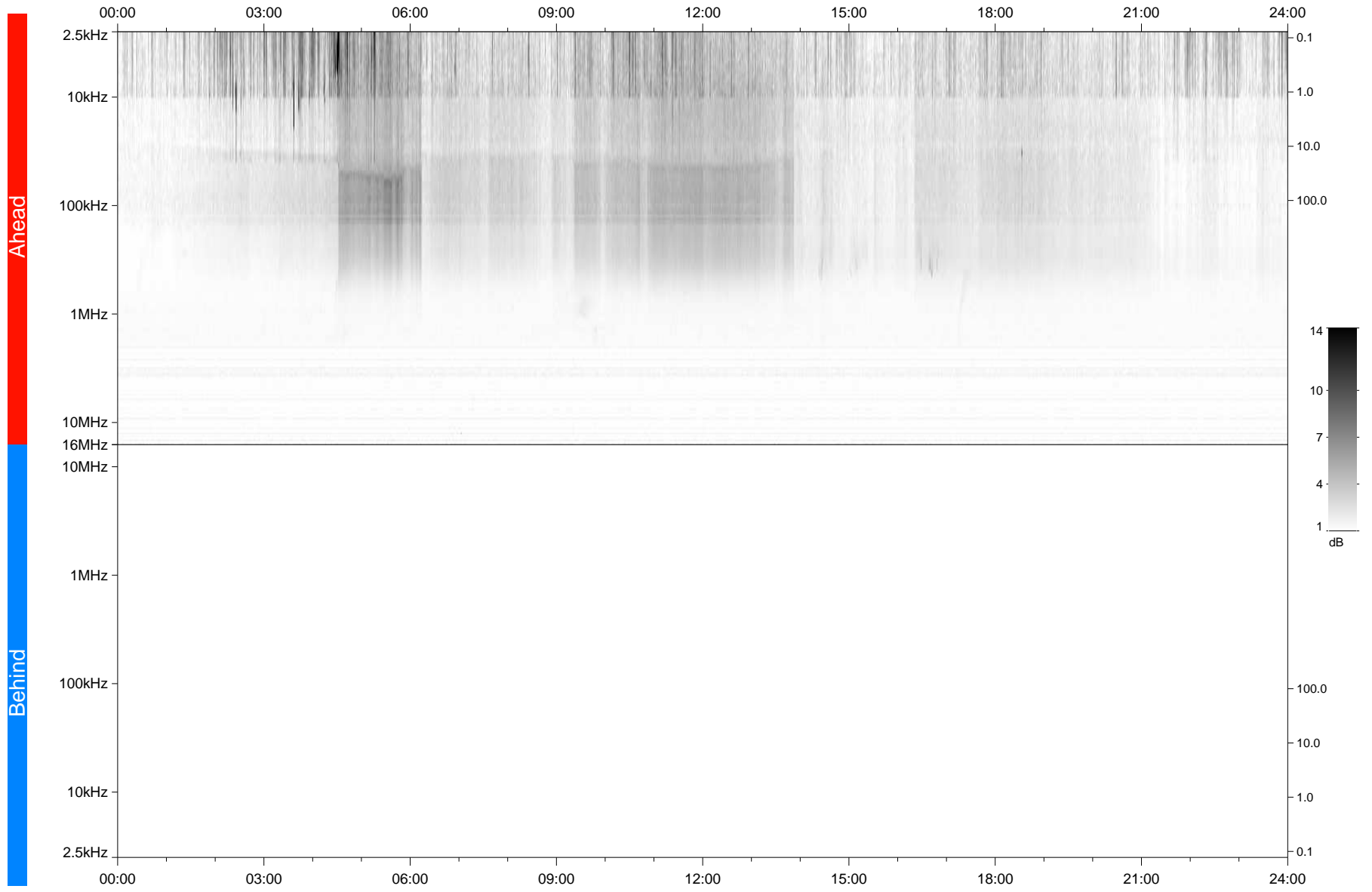


STEREO/WAVES Daily Summary - 14-Oct-2021 (DOY 287)

Ahead source file: swaves_ahead_2021_287_1_05.fin
Ahead PSE Angle: -38.5°



Behind PSE Angle: 34.7°
Behind source file: No STEREO-B data

Time (UTC)

file: stereo_swaves_daily-summary_gray_20211014_v03
made by: space.umn.edu on macOS with TDL 8.8.2 on 2022-08-24 20:20:16, with TLib V945 / dynspec V311