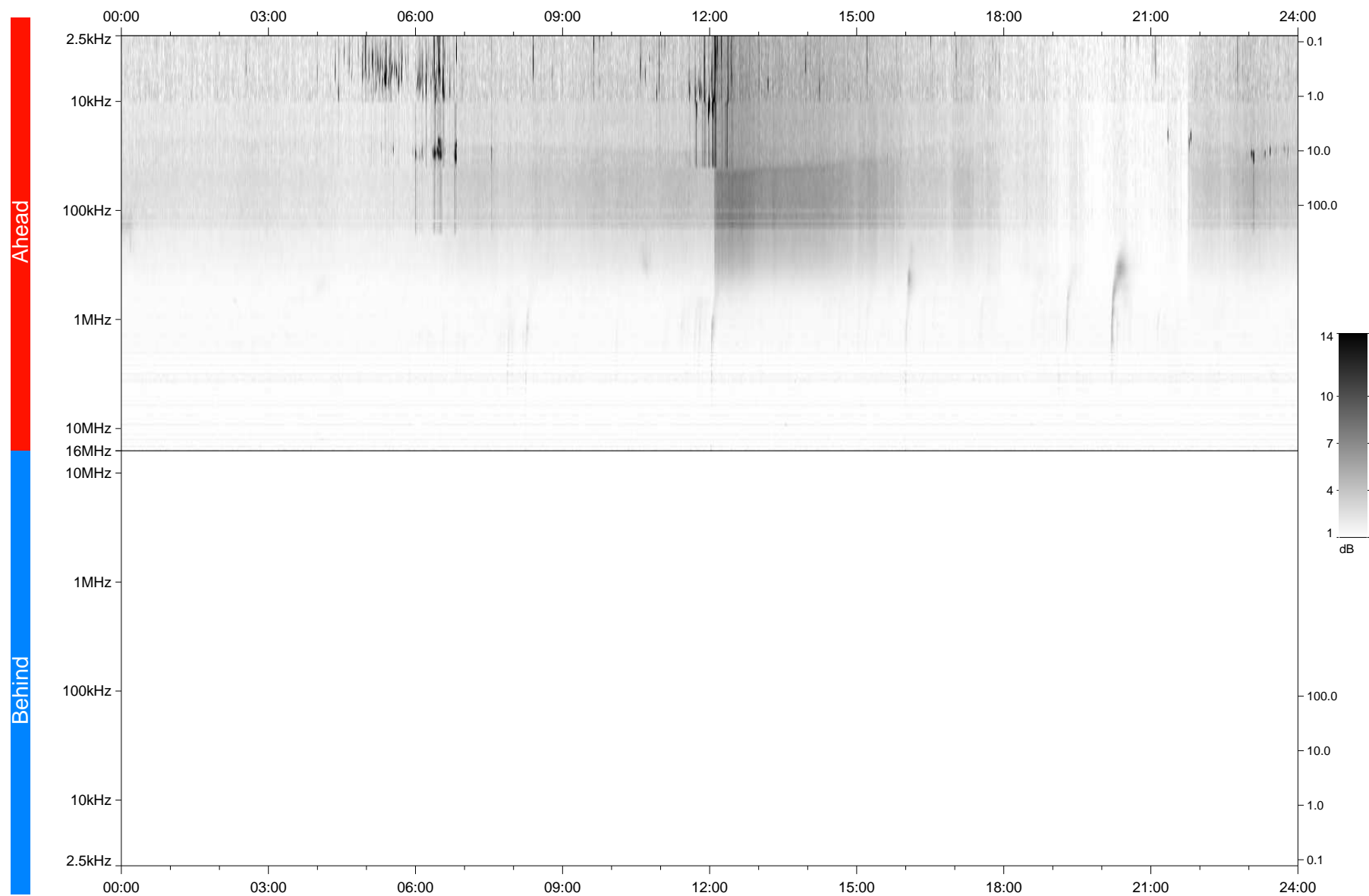


STEREO/WAVES Daily Summary - 12-Oct-2021 (DOY 285)

Ahead source file: swaves_ahead_2021_285_1_06.fin
Ahead PSE Angle: -38.6°



Behind PSE Angle: 34.8°
Behind source file: No STEREO-B data

Time (UTC)

file: stereo_swaves_daily-summary_gray_20211012_v04
made by: space.umn.edu on macOS with IDL 8.8.2 on 2022-10-02 19:28:41, with TMLib V945 / dynspec V311