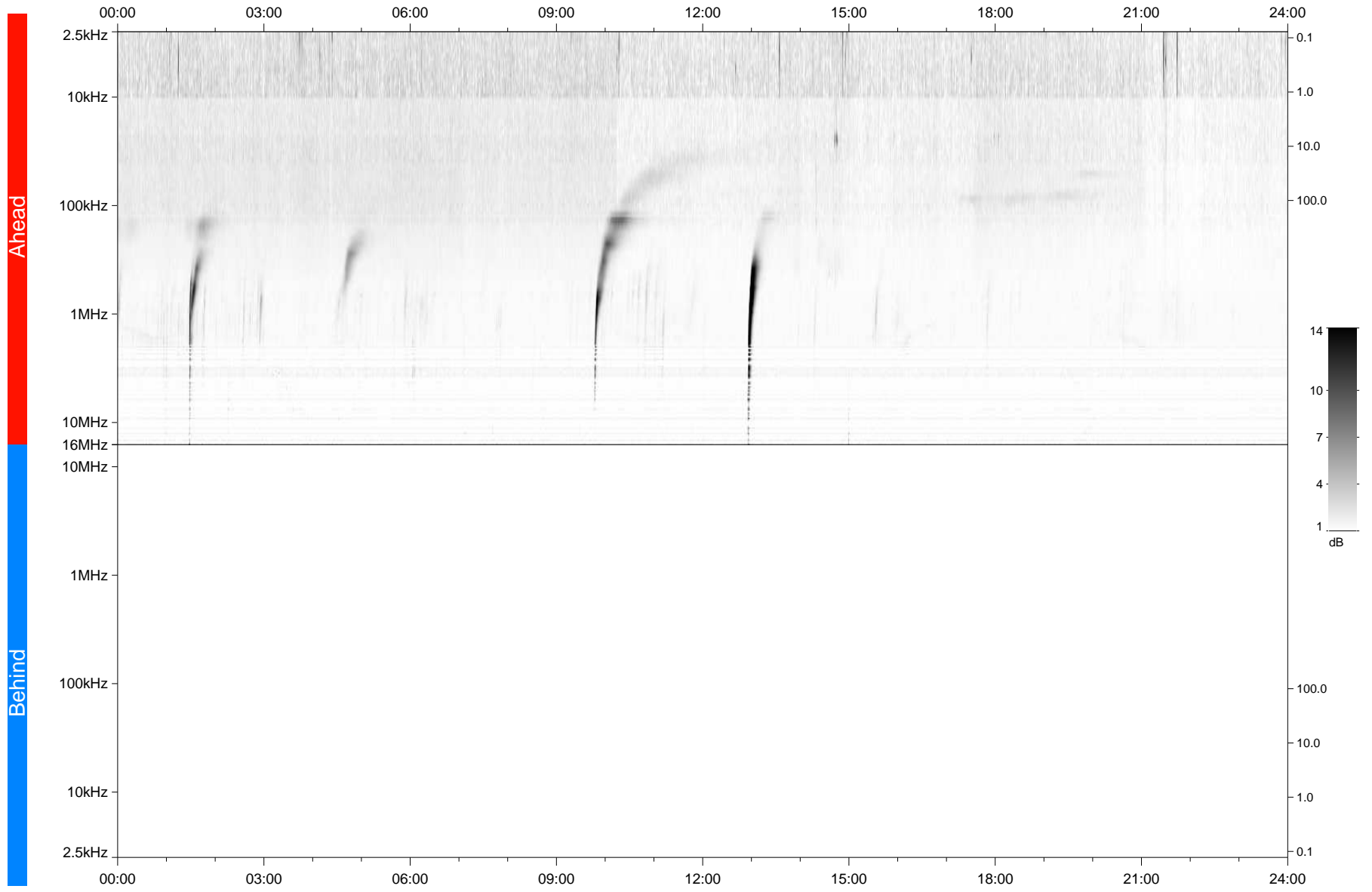


STEREO/WAVES Daily Summary - 10-Oct-2021 (DOY 283)

Ahead source file: swaves_ahead_2021_283_1_07.fin
Ahead PSE Angle: -38.7°



Behind PSE Angle: 34.9°
Behind source file: No STEREO-B data

Time (UTC)

file: stereo_swaves_daily-summary_gray_20211010_v03
made by: space.umn.edu on macOS with TDL 8.8.2 on 2022-08-24 20:14:51, with TLib V945 / dynspec V311