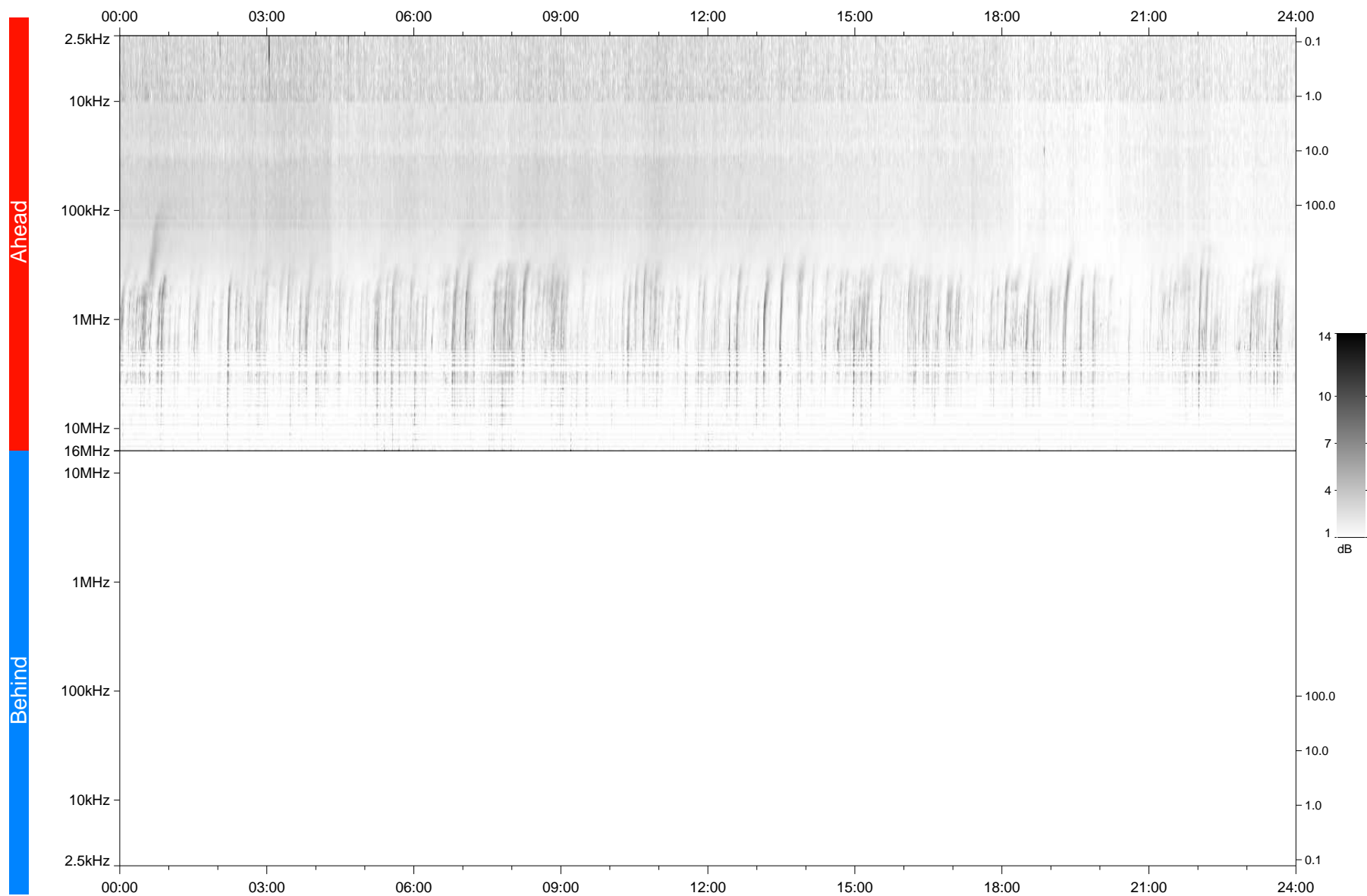


STEREO/WAVES Daily Summary - 08-Oct-2021 (DOY 281)

Ahead source file: swaves_ahead_2021_281_1_06.fin
Ahead PSE Angle: -38.8°



Behind PSE Angle: 35.0°
Behind source file: No STEREO-B data

Time (UTC)

file: stereo_swaves_daily-summary_gray_20211008_v04
made by: space.umn.edu on macOS with TDL 8.8.2 on 2022-10-02 19:22:42, with TLib V945 / dynspec V311