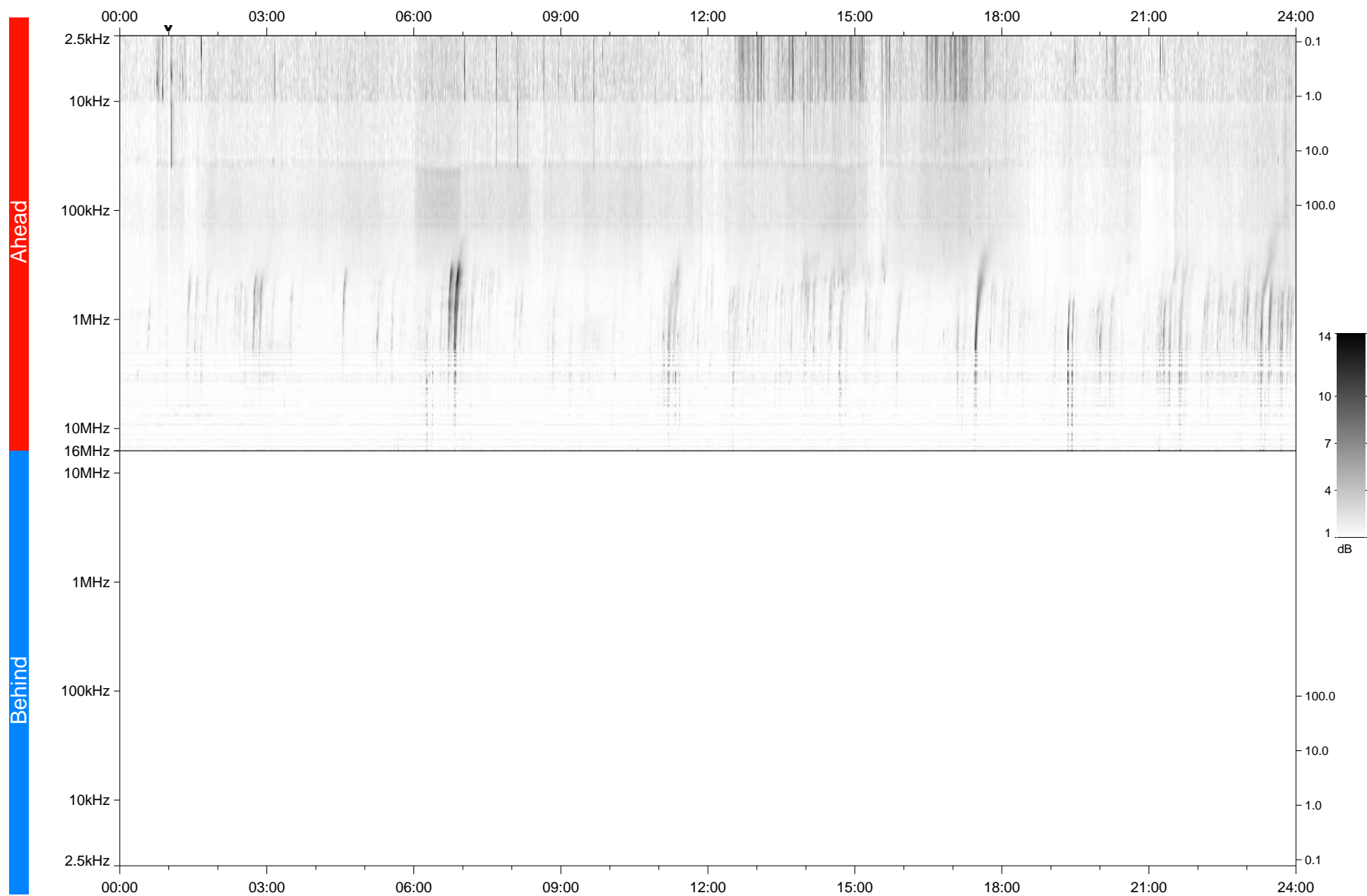


STEREO/WAVES Daily Summary - 07-Oct-2021 (DOY 280)

Ahead source file: swaves_ahead_2021_280_1_05.fin
Ahead PSE Angle: -38.9°



Behind PSE Angle: 35.0°
Behind source file: No STEREO-B data

Time (UTC)

file: stereo_swaves_daily-summary_gray_20211007_v03
made by: space.umn.edu on macOS with TDL 8.8.2 on 2022-08-24 20:10:46, with TLib V945 / dynspec V311