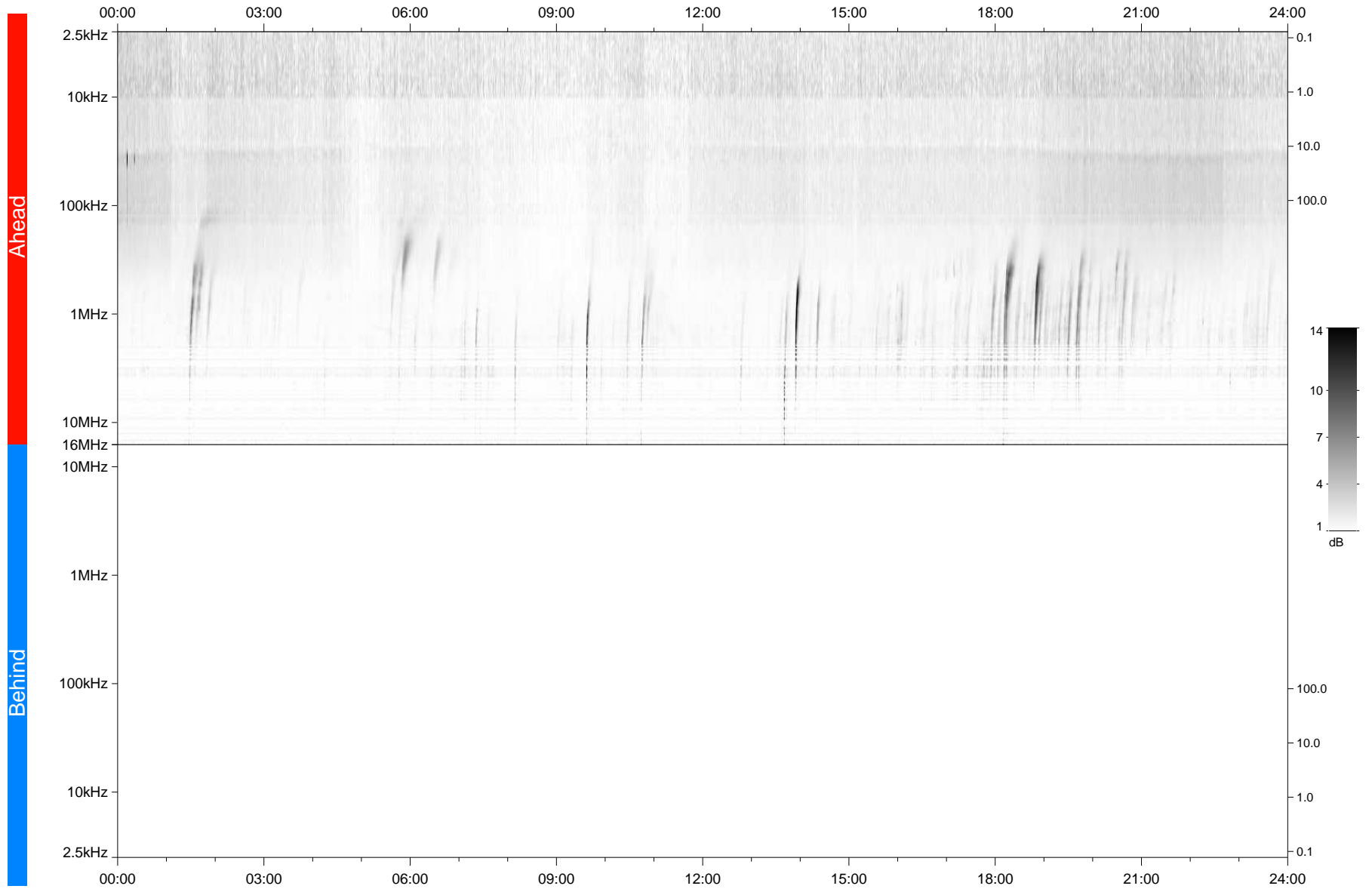


STEREO/WAVES Daily Summary - 04-Oct-2021 (DOY 277)

Ahead source file: swaves_ahead_2021_277_1_05.fin
Ahead PSE Angle: -39.2°



Behind PSE Angle: 35.1°
Behind source file: No STEREO-B data

Time (UTC)

file: stereo_swaves_daily-summary_gray_20211004_v04
made by: space.umn.edu on macOS with IDL 8.8.2 on 2022-10-02 19:16:43, with TLib V945 / dynspec V311