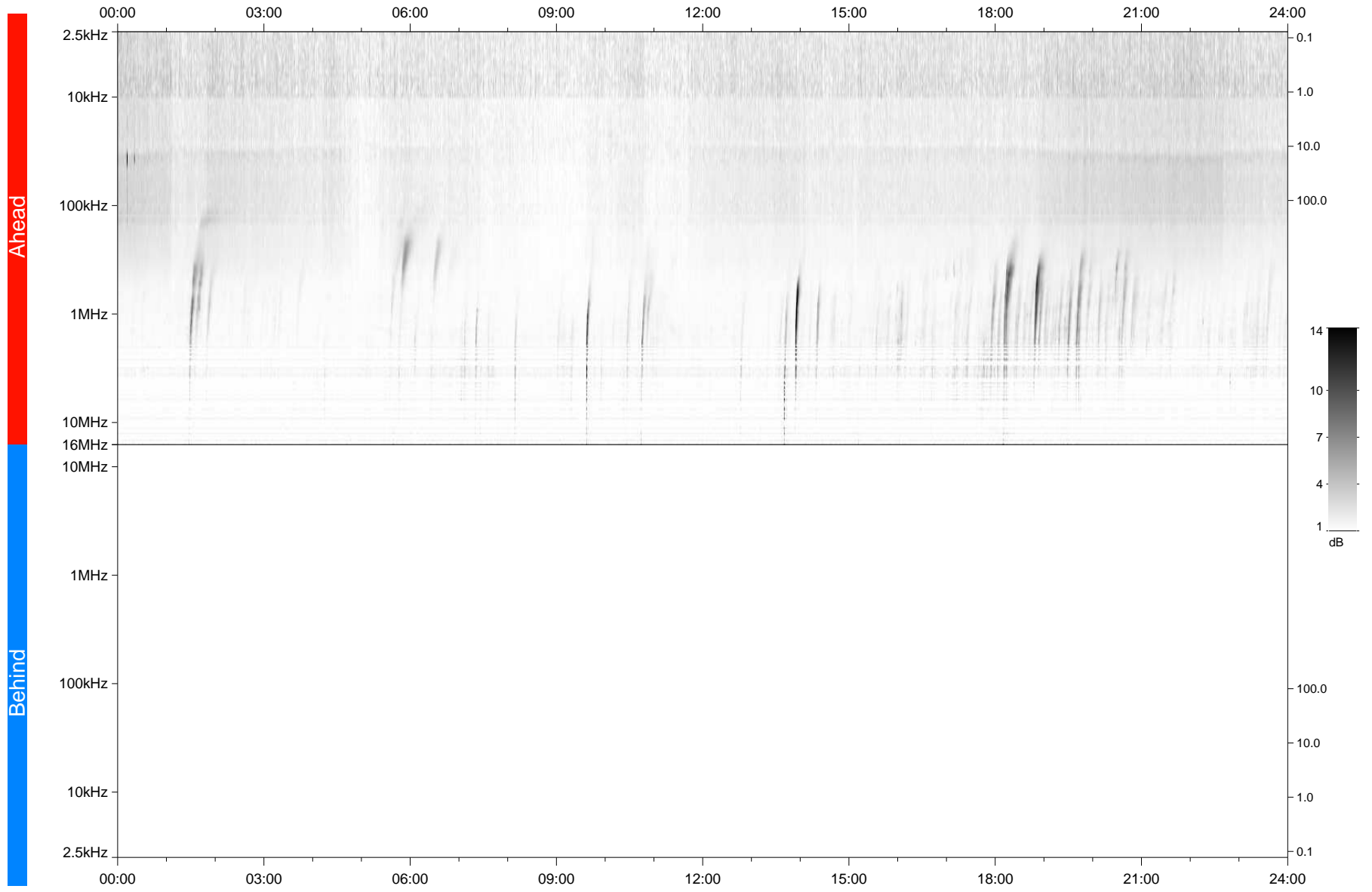


STEREO/WAVES Daily Summary - 04-Oct-2021 (DOY 277)

Ahead source file: swaves_ahead_2021_277_1_05.fin
Ahead PSE Angle: -39.2°



Behind PSE Angle: 35.1°
Behind source file: No STEREO-B data

Time (UTC)

file: stereo_swaves_daily-summary_gray_20211004_v03
made by: space.umn.edu on macOS with TDL 8.8.2 on 2022-08-24 20:06:37, with TMLib V945 / dynspec V311