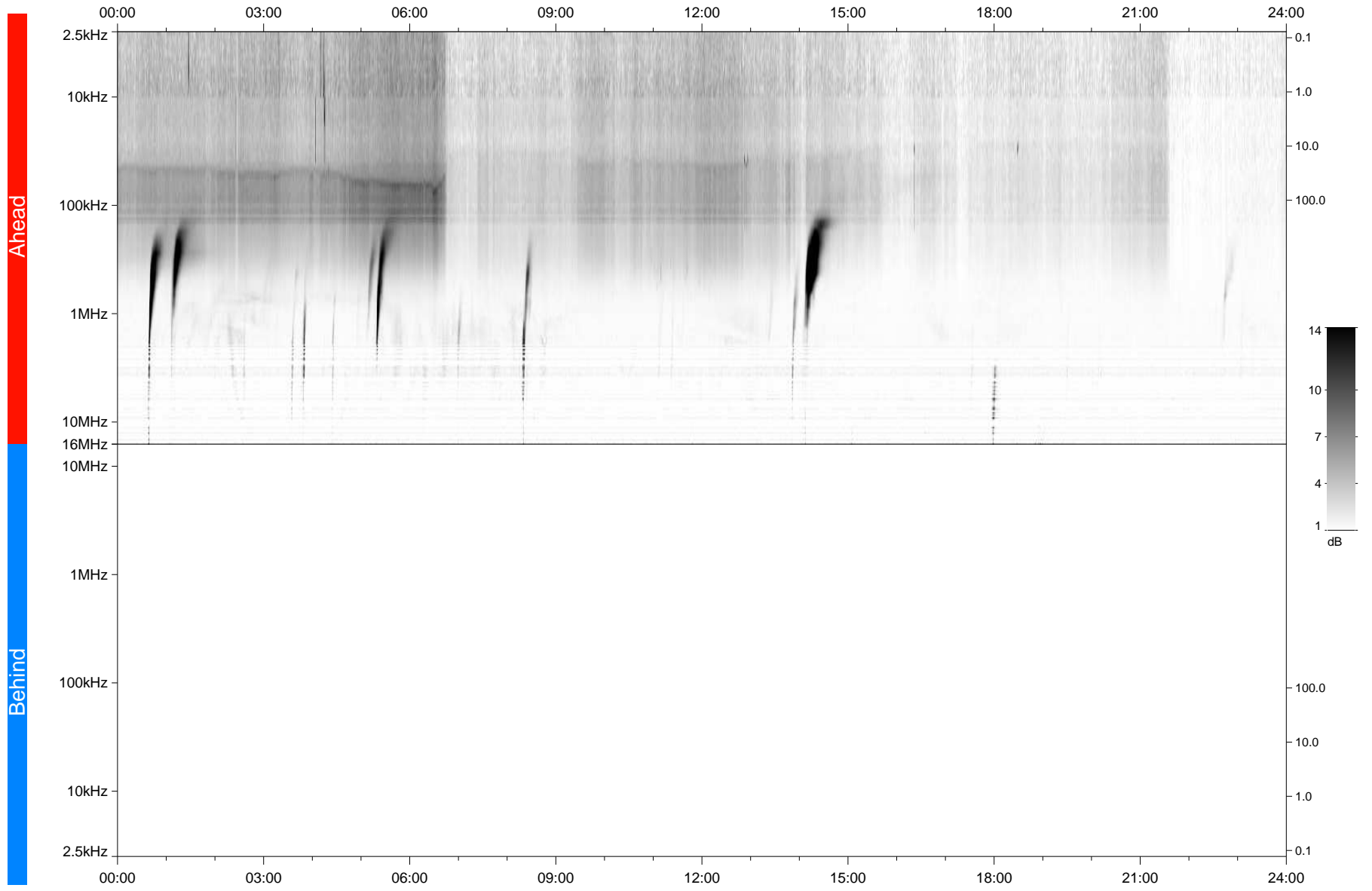


STEREO/WAVES Daily Summary - 18-Sep-2021 (DOY 261)

Ahead source file: swaves_ahead_2021_261_1_05.fin
Ahead PSE Angle: -40.4°



Behind PSE Angle: 35.8°
Behind source file: No STEREO-B data

Time (UTC)

file: stereo_swaves_daily-summary_gray_20210918_v04
made by: space.umn.edu on macOS with IDL 8.8.2 on 2022-10-02 18:52:49, with TMatlab V945 / dynspec V311