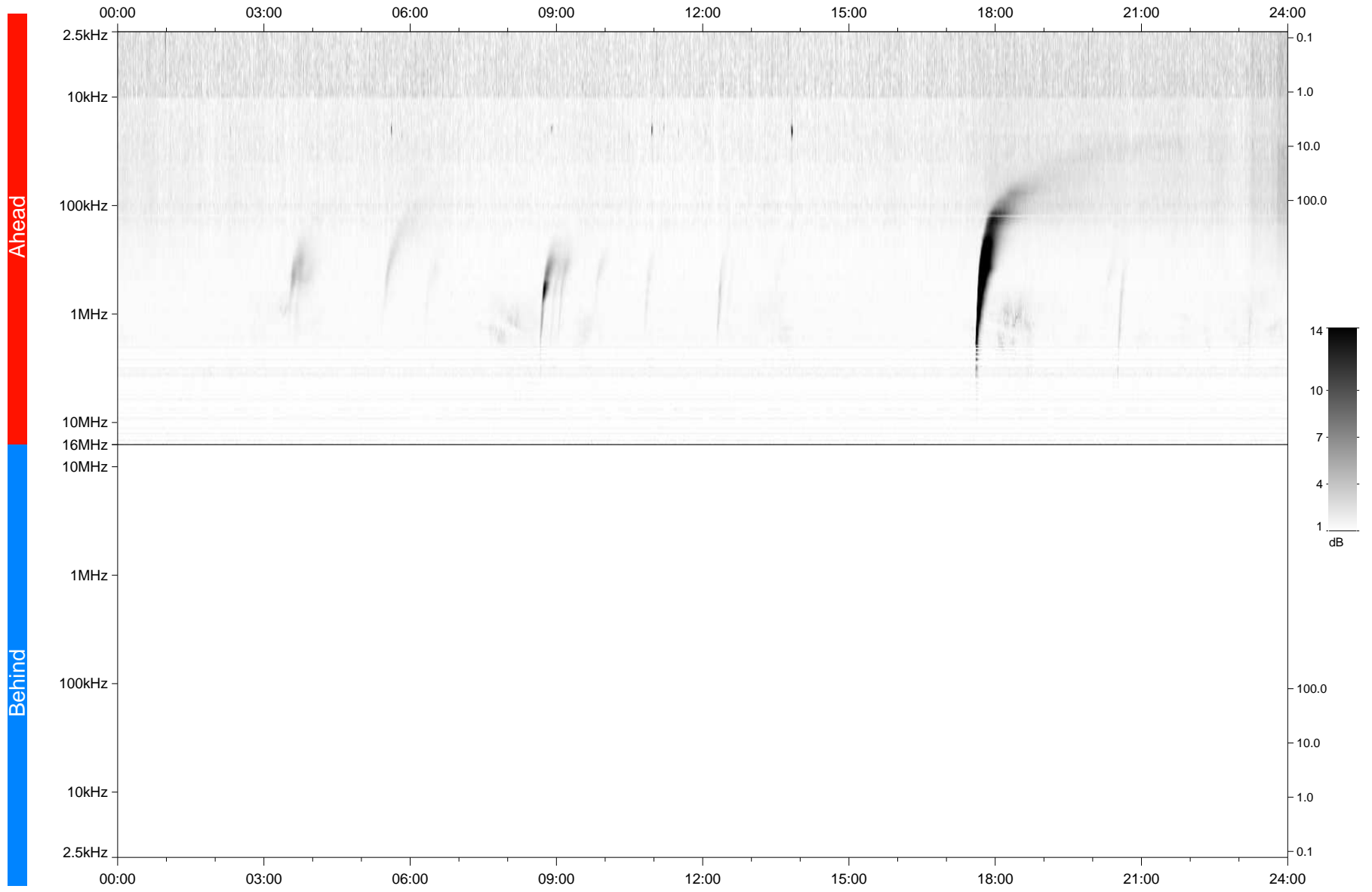


STEREO/WAVES Daily Summary - 12-Sep-2021 (DOY 255)

Ahead source file: swaves_ahead_2021_255_1_08.fin
Ahead PSE Angle: -40.9°



Behind PSE Angle: 36.1°
Behind source file: No STEREO-B data

Time (UTC)

file: stereo_swaves_daily-summary_gray_20210912_v03
made by: space.umn.edu on macOS with TDL 8.8.2 on 2022-08-24 19:36:30, with TLib V945 / dynspec V311