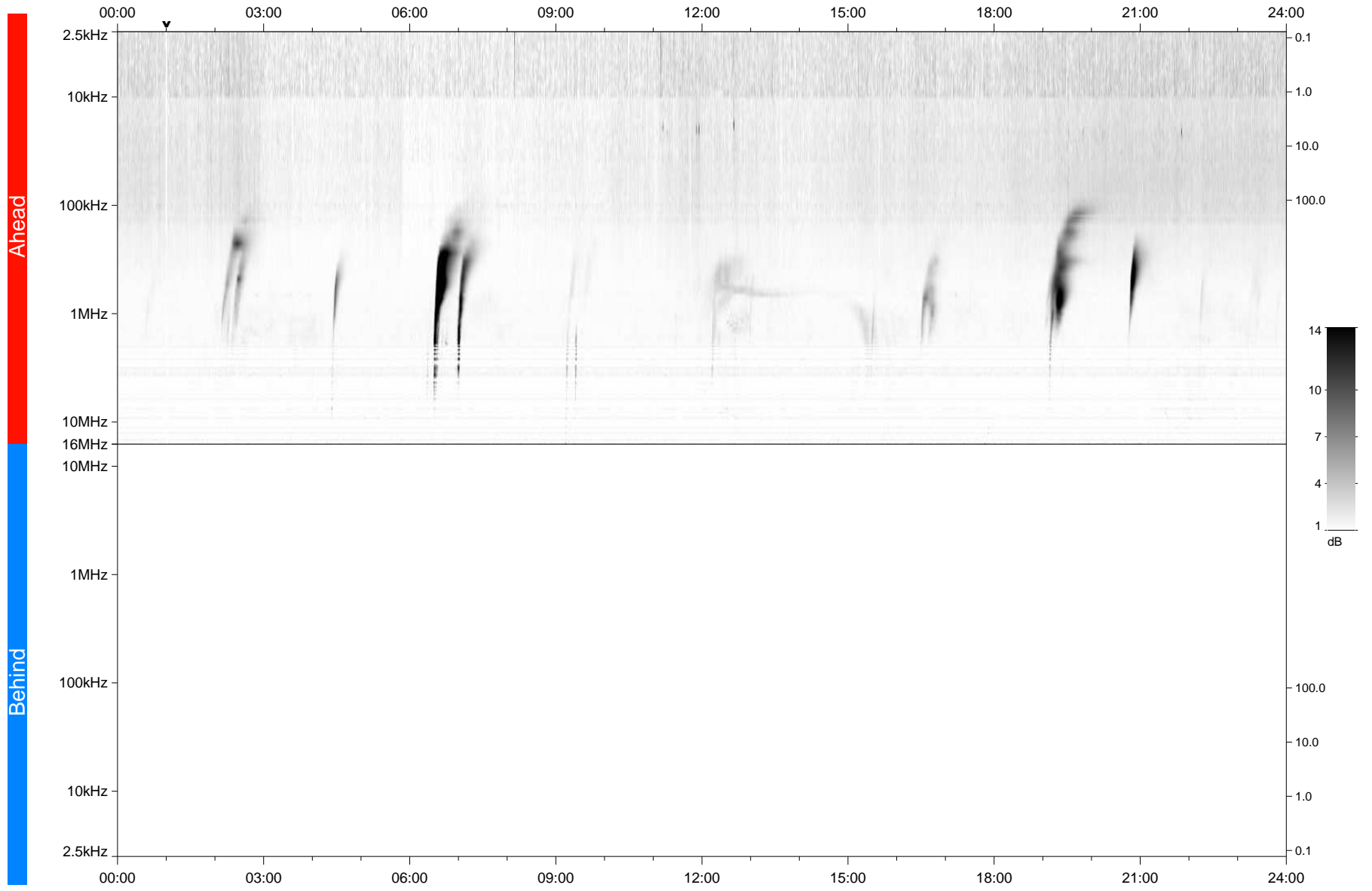


STEREO/WAVES Daily Summary - 11-Sep-2021 (DOY 254)

Ahead source file: swaves_ahead_2021_254_1_06.fin
Ahead PSE Angle: -41.0°



Behind PSE Angle: 36.2°
Behind source file: No STEREO-B data

Time (UTC)

file: stereo_swaves_daily-summary_gray_20210911_v03
made by: space.umn.edu on macOS with IDL 8.8.2 on 2022-08-24 19:35:09, with TLib V945 / dynspec V311