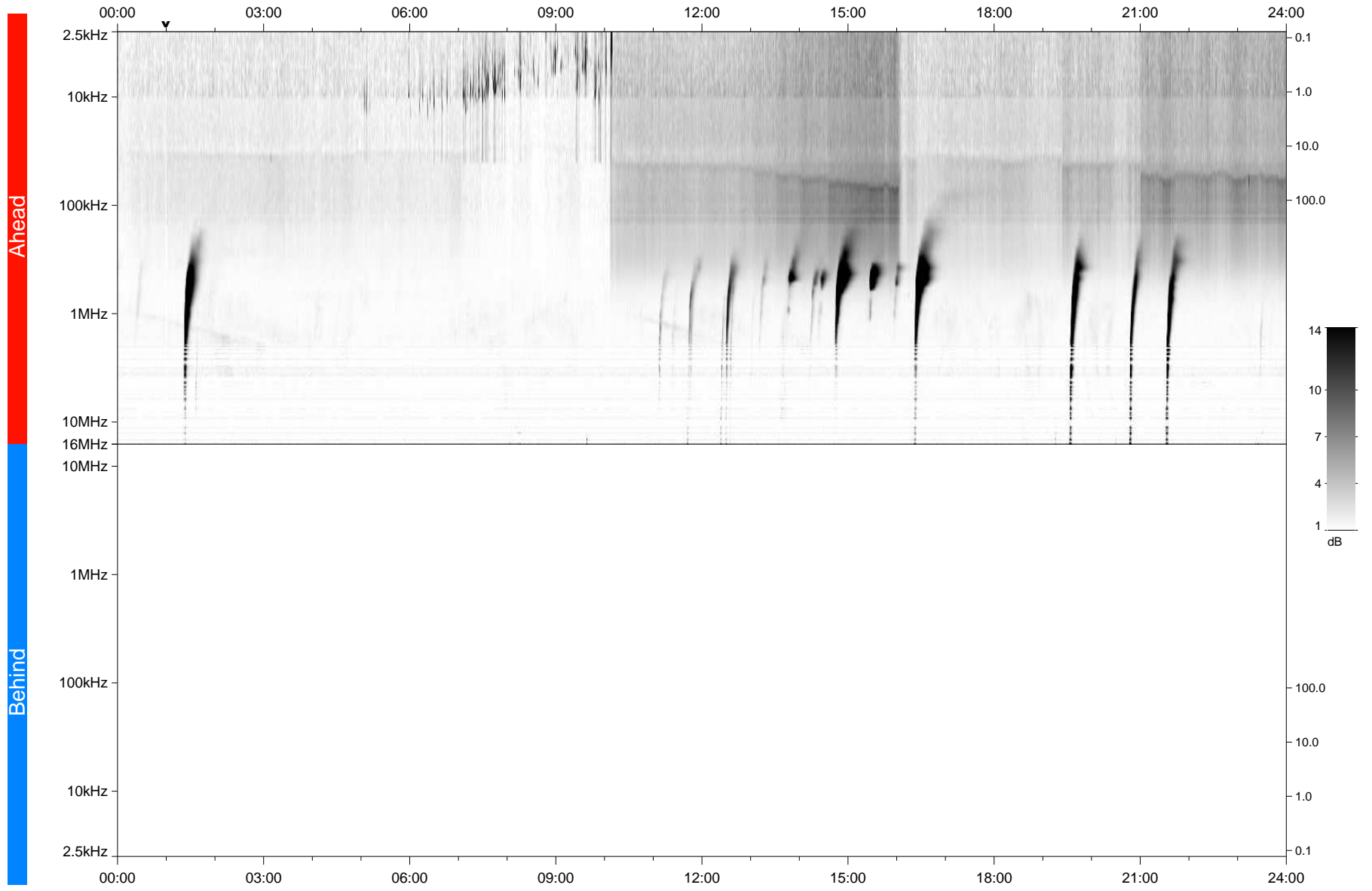


STEREO/WAVES Daily Summary - 30-Aug-2021 (DOY 242)

Ahead source file: swaves_ahead_2021_242_1_05.fin
Ahead PSE Angle: -42.0°



Behind PSE Angle: 36.9°
Behind source file: No STEREO-B data

Time (UTC)

file: stereo_swaves_daily-summary_gray_20210830_v04
made by: space.umn.edu on macOS with IDL 8.8.2 on 2022-10-02 18:24:22, with TMLib V945 / dynspec V311