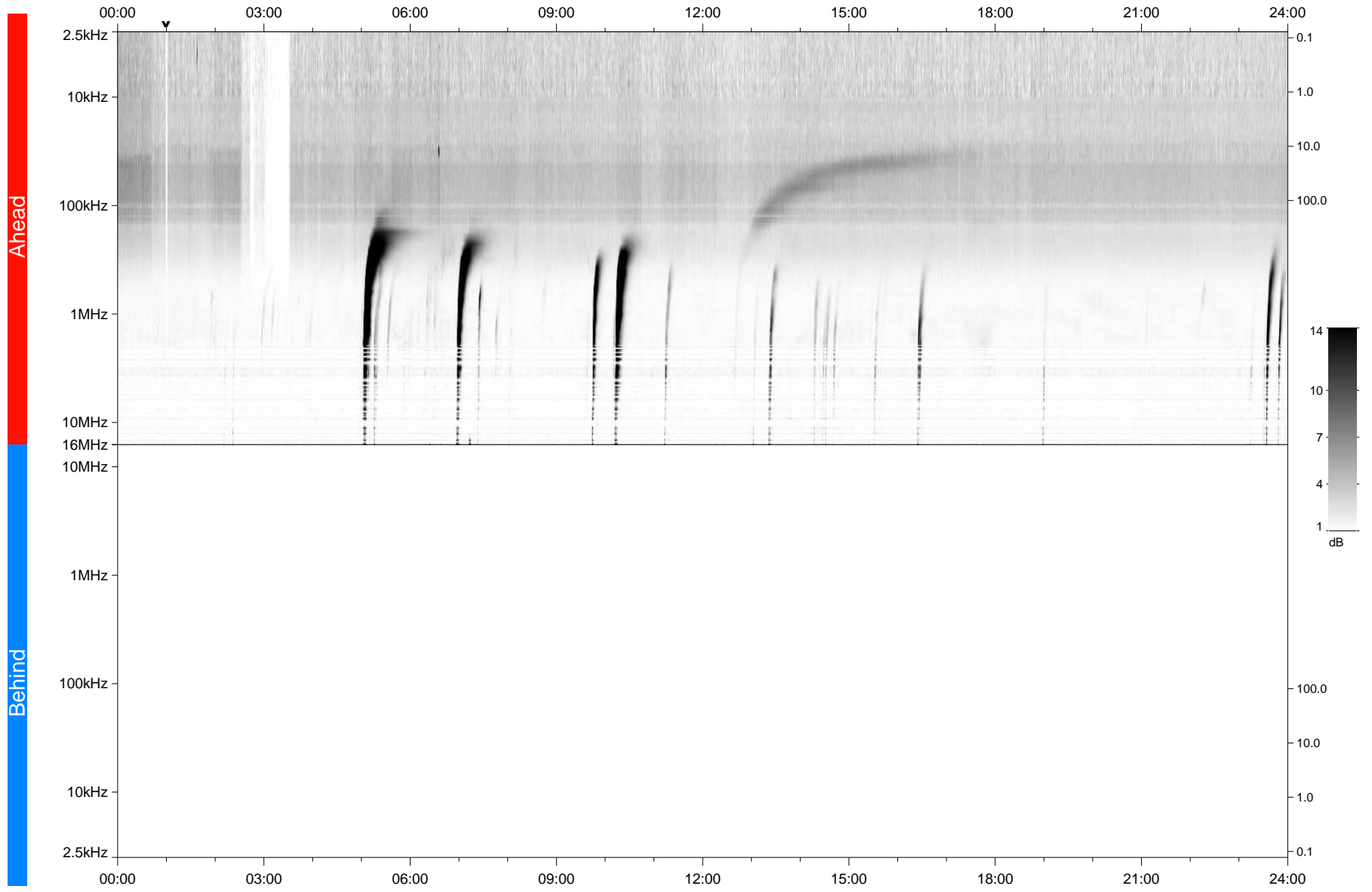


STEREO/WAVES Daily Summary - 28-Aug-2021 (DOY 240)

Ahead source file: swaves_ahead_2021_240_1_05.fin
Ahead PSE Angle: -42.2°



Behind PSE Angle: 37.1°
Behind source file: No STEREO-B data

Time (UTC)

file: stereo_swaves_daily-summary_gray_20210828_v03
made by: space.umn.edu on macOS with IDL 8.8.2 on 2022-08-24 19:16:03, with TLib V945 / dynspec V311