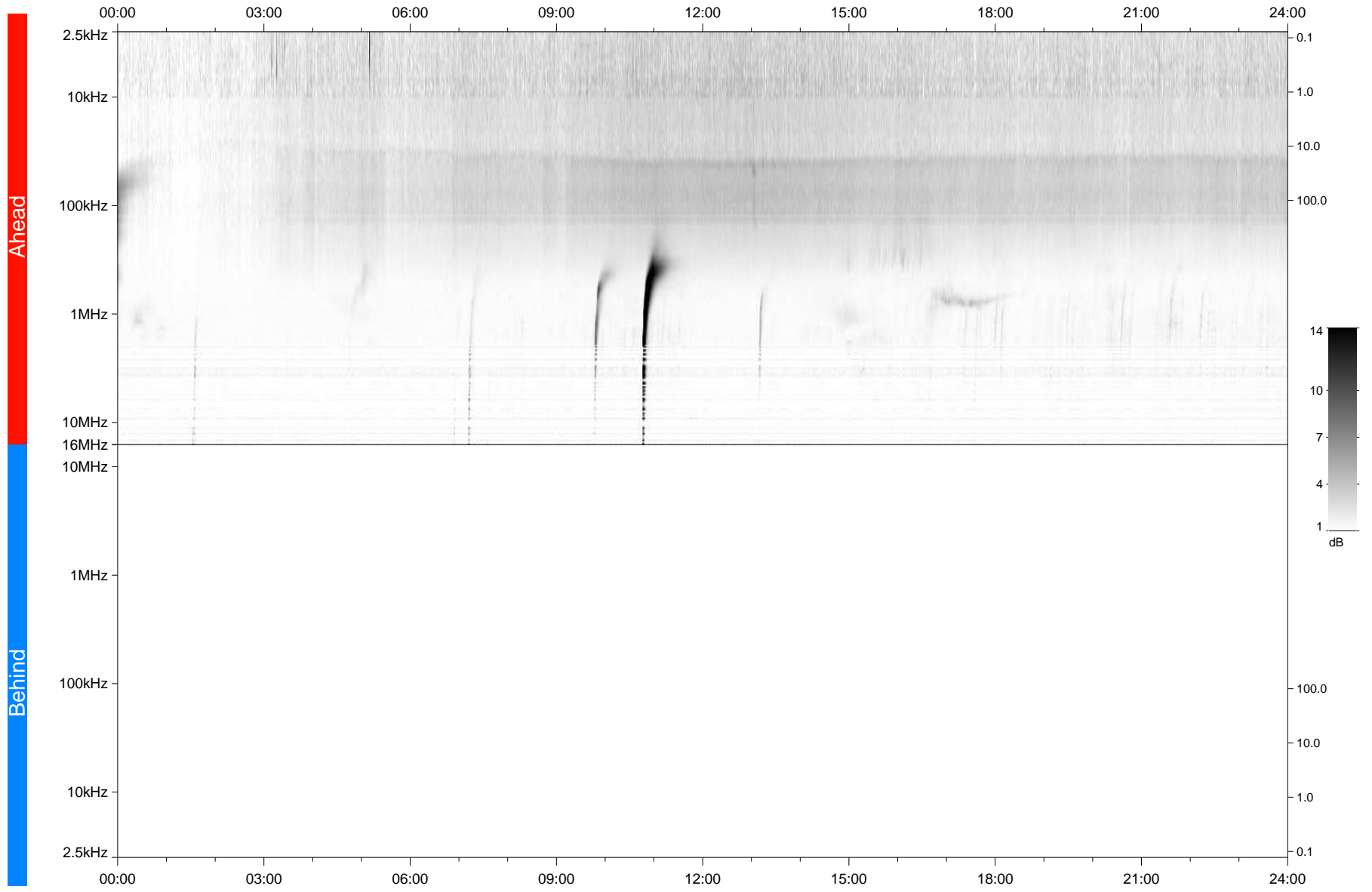


STEREO/WAVES Daily Summary - 27-Aug-2021 (DOY 239)

Ahead source file: swaves_ahead_2021_239_1_05.fin
Ahead PSE Angle: -42.3°



Behind PSE Angle: 37.1°
Behind source file: No STEREO-B data

Time (UTC)

file: stereo_swaves_daily-summary_gray_20210827_v03
made by: space.umn.edu on macOS with TDL 8.8.2 on 2022-08-24 19:14:41, with TLib V945 / dynspec V311