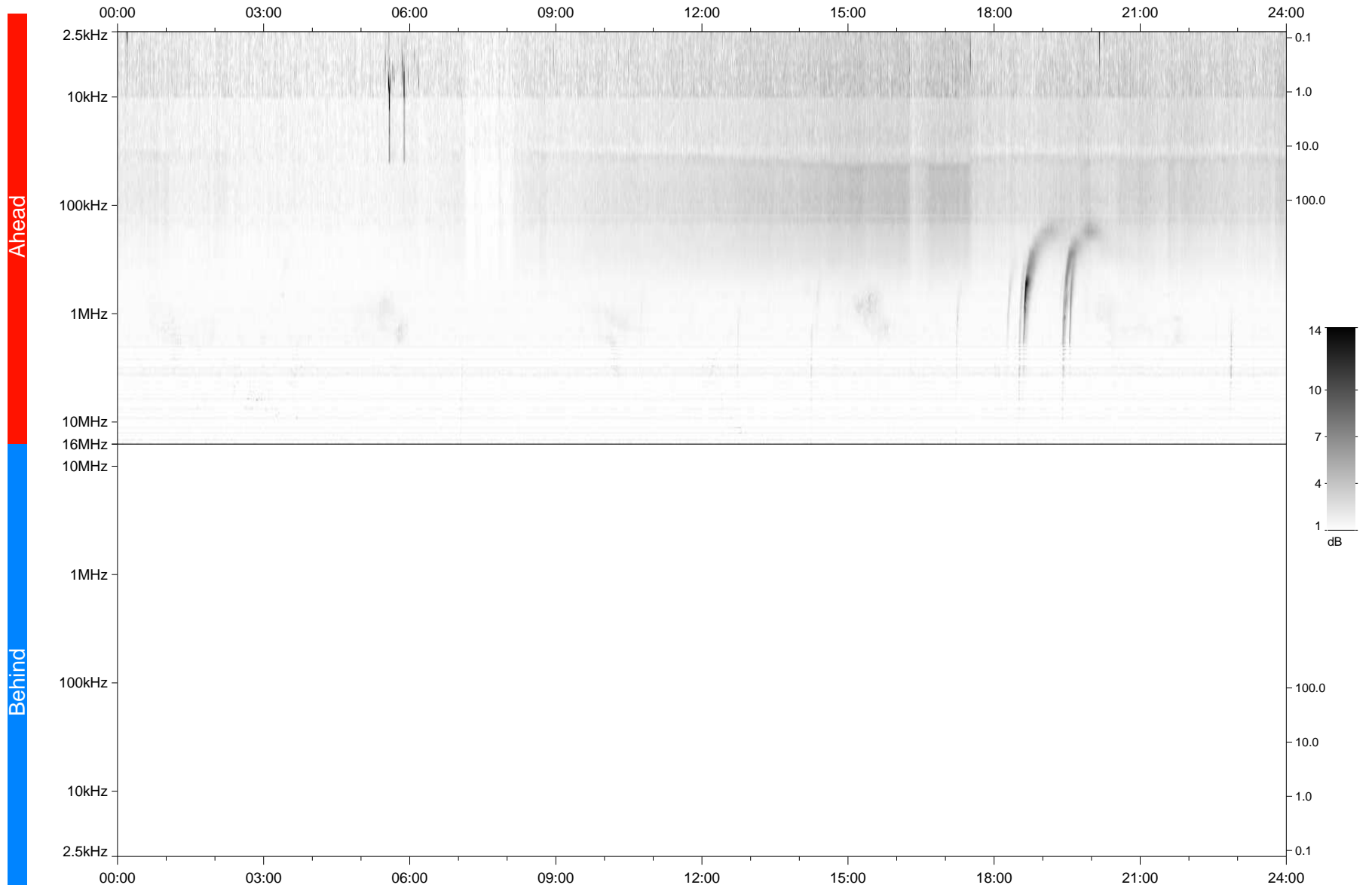


STEREO/WAVES Daily Summary - 21-Aug-2021 (DOY 233)

Ahead source file: swaves_ahead_2021_233_1_05.fin
Ahead PSE Angle: -42.9°



Behind PSE Angle: 37.5°
Behind source file: No STEREO-B data

Time (UTC)

file: stereo_swaves_daily-summary_gray_20210821_v04
made by: space.umn.edu on macOS with TDL 8.8.2 on 2022-10-02 18:10:52, with TLib V945 / dynspec V311