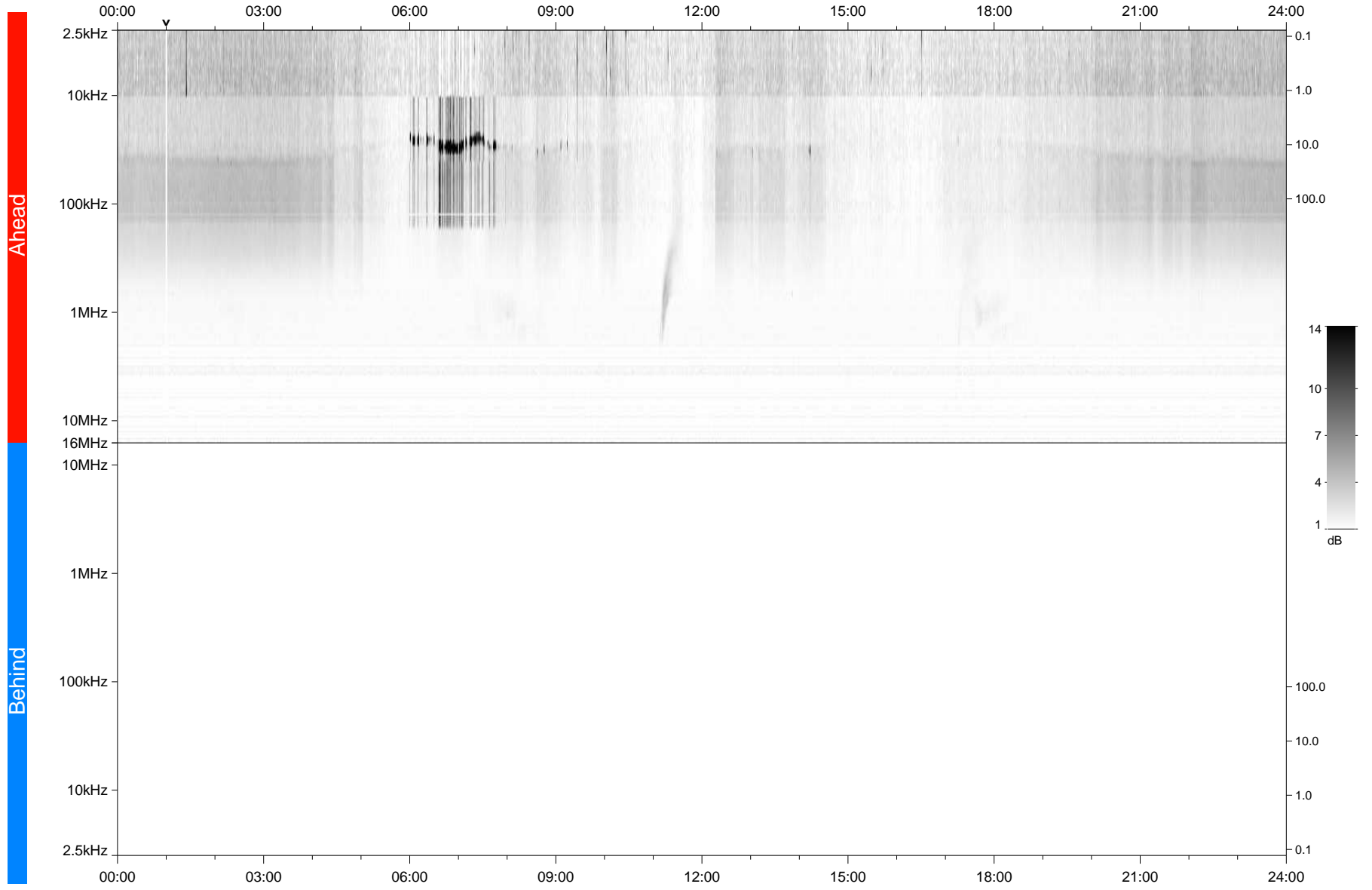


STEREO/WAVES Daily Summary - 18-Aug-2021 (DOY 230)

Ahead source file: swaves_ahead_2021_230_1_05.fin
Ahead PSE Angle: -43.1°



Behind PSE Angle: 37.8°
Behind source file: No STEREO-B data

Time (UTC)

file: stereo_swaves_daily-summary_gray_20210818_v04
made by: space.umn.edu on macOS with TDL 8.8.2 on 2022-10-02 18:06:22, with TLib V945 / dynspec V311